



## We're here to serve you...

For the latest travel information, stop by our visitor information center located in Smithfield. Our staff will assist you with promotional materials, coupons, deals around town, and information on a variety of events to enjoy while visiting the county.

The Johnston County Visitors Center is located at 234 Venture Drive, Smithfield, NC and is open Mon-Fri 8am-5pm. Additionally, visitor information may be found at area attractions and hotels and chambers of commerce.



234 Venture Drive • Smithfield, NC 27577  
(919) 989-8687 • fax (919) 989-6295

*1-800-441-stay*

johnstoncountync.org  
info@johnstoncountync.org

© 2018 Johnston County Visitors Bureau.

The information in this guide is believed to be accurate at the time of printing. Information and prices are subject to change without notice. Call individual businesses for confirmation. The Johnston County Visitors Bureau assumes no responsibility for errors or omissions. Corrections are welcome.

## Contents

Plan your visit .....	2
Accommodations.....	3
<b>Things to do</b>	
agri-tourism.....	10
the arts.....	12
history & heritage .....	14
recreation .....	16
<b>Transportation Services.....</b>	<b>21</b>
<b>Shopping .....</b>	<b>22</b>
Carolina Premium Outlet directory .....	24
<b>Dining .....</b>	<b>27</b>
<b>Weddings/Special Events .....</b>	<b>30</b>
<b>Annual events .....</b>	<b>32</b>

Keep up with us on Facebook, Twitter,  
YouTube, JCVB Blog, Pinterest and Instagram!



Find us on Google Play and the iTunes App Store  
by searching "beer, wine, shine".



# Plan Your Visit



Our official destination guide for planning a visit to the Smithfield/Johnston County area provides you with listings of accommodations, attractions, shopping, dining, but now even more. Whether you are traveling through the state to your final vacation destination or seeking a weekend get-a-way from colder climates, we have put together suggestions for day trips, culinary trails, and girlfriend getaways to help in your planning process.



Stay in touch via our social media sites, website, and calendar for the latest news and happenings! Or call upon our staff at the Johnston County Visitors Bureau for additional information, help with group itineraries, or planning a destination wedding or special event.



[facebook.com/JoCoVisitorsBureau](https://facebook.com/JoCoVisitorsBureau) | [twitter.com/JoCoTourism](https://twitter.com/JoCoTourism)  
[youtube.com/user/VisitJohnstonCounty/videos](https://youtube.com/user/VisitJohnstonCounty/videos)  
[pinterest.com/smithfieldnc/](https://pinterest.com/smithfieldnc/) | [johnstoncountync.org/blog](https://johnstoncountync.org/blog)  
[instagram.com/visitjoco](https://instagram.com/visitjoco)



# Places to Stay



## Benson

### Days Inn

Located along the crossroads of major interstates I-95 and I-40, this 103 room hotel is accessible directly from Exit 79 on I-95, with very affordable rates.

202 N. Honeycutt St., Benson 27504  
919-894-2031

[daysinn.com/hotel/06776](http://daysinn.com/hotel/06776)



### Hampton Inn

New hotel opening in April 2018, located at Exit 79 on I-95, next to the 3-acre Dog Park in Benson, convenient to GALOT and Broadslab Distillery.

100 Water Place Landing, Benson 27504  
1-800-426-7866

[hamptoninn.com](http://hamptoninn.com)



### Preston Woodall House

A historic experience, a romantic special event, or your most important day ever-your wedding, this bed & breakfast offers a beautiful and charming venue.

201 E. Hill St., Benson 27504  
919-894-7025

[woodallhouse.com](http://woodallhouse.com)



## Clayton

### Comfort Suites

This all suite property is in the heart of Clayton and very convenient for corporate travelers to the area.

761 Enterprise Dr., Clayton 27520  
919-553-1234

[comfortsuites.com/nc302](http://comfortsuites.com/nc302)



### Morning Glory Inn

This 5-guest room bed and breakfast is located in a historic home and is warm and inviting for guests.

507 E. Second St., Clayton 27520  
919-550-8547

[morning-glory-inn.com](http://morning-glory-inn.com)



AAA Rating  
★★★



### Hotel Symbols Key



pet friendly



non-smoking rooms



outdoor pool



indoor pool



wifi available



indoor corridors



exercise facility



meeting facility



continental breakfast



ADA accessible

# Four Oaks

## Four Oaks Lodging

This motel is conveniently located off I-95 with 12 guest rooms and is pet friendly.

4606 US Hwy 301 S., Four Oaks 27524  
919-963-3596

[fouroakslodging.com](http://fouroakslodging.com)



## Travelers Inn

This 53 ground floor room motel is located off I-95, Exit-90 in close proximity to Bentonville Battlefield and Howell Woods.

97 NC Hwy 96 S., Four Oaks 27524  
919-934-4194



## The Dwelling Place Bed & Breakfast

This two room bed & breakfast is all non-smoking and located just south of Four Oaks on US 301.

6734 NC Hwy 301 S., Four Oaks 27524  
919-963-4088



# Garner (I-40, Exit 312)

## Comfort Inn

This 63-room hotel is conveniently located to Clayton and Downtown Raleigh on I-40, Exit 312.

126 Cleveland Crossing Dr., Garner 27529  
919-773-1110

[comfort.com/nc366](http://comfort.com/nc366)



## Sleep Inn

This 87-room hotel is conveniently located on I-40, Exit 312 only minutes from Clayton and Downtown Raleigh.

105 Commerce Pkwy., Garner 27529  
919-772-7771

[sleepinn.com/nc321](http://sleepinn.com/nc321)



## Hampton Inn

This 72-room hotel is conveniently located on I-40, Exit 312 only 7 miles from Clayton and 12 miles to Downtown Raleigh.

100 Hampton Dr., Garner 27529  
919-773-1977

[hampton.com](http://hampton.com)



## Super 8

This 40-room hotel is conveniently located on I-40, Exit 312 only minutes from Clayton and Downtown Raleigh.

101 Leone Ct., Garner 27529  
919-661-1991

[super8garner.com](http://super8garner.com)



## Holiday Inn Express

This 67-room hotel is conveniently located along I-440 just minutes from Clayton and Downtown Raleigh.

105 Leone Ct., Garner 27529  
919-719-3415

[hiexpress.com/claytonnc](http://hiexpress.com/claytonnc)



## WoodSpring Suites

This extended stay is a great choice for tourists looking for a hotel that offers the comforts of home while away.

142 Cleveland Crossing Dr., Garner 27529  
919-779-5800

[woodspring.com/wsraleighgarner](http://woodspring.com/wsraleighgarner)



## Budget Inn

This motel is conveniently located off of I-95 with 17 guest rooms and is pet friendly.

212 S. Church St., Kenly 27542  
919-284-5588



## Motel 6

For the mid-way overnight stop along I-95 in NC, choose this 77 room motel off Exit 106.

843 Johnston Pkwy., Kenly 27542  
919-284-3800  
motel6.com



## Deluxe Inn

This 24 room motel is conveniently located off I-95, Exit 107 near Downtown Kenly.

403 US Hwy 301 S., Kenly 27542  
919-284-3655



## Quality Inn

This 60 room hotel has a convenient location for an overnight stay in Kenly

405 S. Church St., Kenly 27542  
919-284-1000  
qualityinn.com/nc229



## Red Roof Inn

This 64 room property is located along I-95, Exit 106 adjacent to the Kenly 95 Truckstop.

1139 Johnston Pkwy., Kenly 27542  
919-284-3400  
redroof.com/property/RR1869/



# Girlfriends GETAWAY



*The number one reason people visit our area is outlet shopping at Carolina Premium Outlets in Smithfield – by far we are the #1 outlet shopping destination in eastern North Carolina. Stop by DeWayne's in Selma for a unique shopping experience!*

For the Girlfriends Getaway Weekend Package, we have pulled together hotel discounts, museum admission coupons to the Ava Gardner Museum, chocolate treats, discounts on massages and all will be waiting for you in a gift bag when you check in! Shop, Relax, and Repeat! Come visit us often for deals and more deals!

[johnstoncountync.org/girlfriends](http://johnstoncountync.org/girlfriends)

## Days Inn

This 60 room hotel is conveniently located near JR Cigar, along I-95, Exit 97.

115 US Hwy 70-A, Selma 27576

919-965-4000

[daysinn.com/hotel/26253](http://daysinn.com/hotel/26253)



## Knights Inn

A 40-room exterior corridor property located on I-95, Exit 97 and close to JR Cigar.

100 Graham St., Selma 27576

919-202-0000

[knightsinn.com/selmanc](http://knightsinn.com/selmanc)



## Econo Lodge

This 71-room property is located near Carolina Premium Outlets and JR Cigar on I-95 at Exit 97.

1780 Outlet Center Dr., Selma 27576

919-965-3716

[econolodge.com/nc760](http://econolodge.com/nc760)



## Hampton Inn

This 76 room property is located adjacent to Carolina Premium Outlets and across from JR Cigar, along I-95 at Exit 97.

1695 Outlet Center Dr., Selma 27576

919-965-6151

[hampton.com](http://hampton.com)



## Masters Inn

Conveniently located for travelers on I-95, this motel has exterior corridors and a courtyard pool.

318 US Hwy 70 E., Selma 27576

919-965-3771

[mastersinn.net](http://mastersinn.net)



## Quality Inn

Conveniently located along I-95, this 80 room hotel is a 2014 Gold Award Winner. I-95 Exit 97.

1705 Outlet Center Dr., Selma 27576

919-965-5200

[qualityinn.com/nc145](http://qualityinn.com/nc145)



## Suburban Extended Stay Hotel

Offering everything you need to make you feel at home-kitchens, laundry, and more; this 42-room hotel is located near Carolina Premium Outlets and JR Cigar.

1780 Outlet Center Dr., Selma 27576

919-965-3718

[suburbanhotels.com/nc767](http://suburbanhotels.com/nc767)



## Americas Best Value Inn

This 60 room motel along I-95, Exit 95 offers ideal accommodations, affordable rates, and a friendly 24-hour staff to help make your stay enjoyable.

197 Mallard Rd., Smithfield 27577

919-934-7176

[americasbestvalueinn.com](http://americasbestvalueinn.com)



## Baymont Inn & Suites

Enjoy a home away from home at this 40-room hotel located on I-95, Exit 95 with prime access to area attractions and restaurants.

125 S. Equity Dr., Smithfield 27577

919-989-5901

[baymontinns.com/hotel/46941](http://baymontinns.com/hotel/46941)



## Becky's Log Cabin Motel & Restaurant

Becky's Log Cabin in Smithfield, NC serves up the best that Johnston County has to offer with unique dining and restful lodging.

2491 US Hwy 70 Bus E., Smithfield 27577

919-934-1534

[beckys-logcabin.com](http://beckys-logcabin.com)



## Holiday Inn Express and Suites

This hotel provides affordable, comfortable & friendly accommodations for both leisure & corporate travelers while exploring the area.

190 S. Equity Dr., Smithfield 27577

919-934-3350

[hiexpress.com/smithfieldnc](http://hiexpress.com/smithfieldnc)



## Best Western

This non-smoking, 57 room hotel is located just minutes away from a variety of key area attractions.

145 S. Equity Dr., Smithfield 27577

919-989-4047

[bestwesternnorthcarolina.com/hotels/best-western-smithfield-inn](http://bestwesternnorthcarolina.com/hotels/best-western-smithfield-inn)



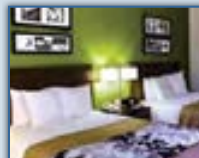
## Sleep Inn and Suites

Experience simply stylish décor of Designed to Dream at our Platinum Awarded Sleep Inn. You're invited to see why we're ranked "Top of the Brand!"

270 N. Equity Dr., Smithfield 27577

919-209-2360

[sleepinn.com/nc466](http://sleepinn.com/nc466)



## Comfort Inn

This 72 room hotel is ideally located on I-95, Exit 95, offering easy access to many local attractions and points of interest.

170 S. Equity Dr., Smithfield 27577

919-938-4444

[comfortinn.com/nc510](http://comfortinn.com/nc510)



## Super 8

Sample Southern hospitality at our conveniently located hotel offering handy amenities, including a microwave and refrigerator. Kitchenette suites are available for added comfort.

735 Outlet Center Dr., Smithfield 27577

919-989-8988

[super8.com/smithfield](http://super8.com/smithfield)



## Country Inn and Suites

Take an overnight break at this brand new 77-room hotel with many attractions and restaurants close by.

250 N. Equity Dr., Smithfield 27577

919-934-3411

[countryinns.com/smithfieldnc](http://countryinns.com/smithfieldnc)



## Village Motor Lodge

This motel has 101 guest rooms on an expansive lawn facing I-95, on Exit 95 and has welcomed travelers for over 60 years.

198 Mallard Rd., Smithfield 27577

919-934-7126



## Fairfield Inn and Suites

This hotel is located next door to Carolina Premium Outlets, Outback Steakhouse, and Bob Evans. Complimentary hot breakfast is included!

809 Venture Dr., Smithfield 27577

919-938-0050

[fairfieldinn.com/rdusc](http://fairfieldinn.com/rdusc)



## Hotel Symbols Key



# Camping RV

## Four Oaks RV Resort

This RV Park is conveniently located off of I-95, Exit 90 with 18 RV hook ups.

4596 US HWY 301 S., Four Oaks 27524  
919-963-3596

[fouroaksrvresort.com](http://fouroaksrvresort.com)



## Raleigh Oaks RV Resort & Cottages

For families seeking a convenient "staycation" or for contractors working nearby, the resort is the perfect resolution for short term, long term and weekend stays.

527 US HWY 701 S., Four Oaks 27524  
919-934-3181

[raleighoaksrvresort.com](http://raleighoaksrvresort.com)



## Happy Trails Campground

This RV Park is conveniently located off of I-95, Exit 90 with 21 RV hook ups.

406 US HWY 701 S., Four Oaks 27524  
919-410-4124



## RVacation RV Park

This campground has large, level, pull-thru sites so no need to worry if you will fit. The facilities are very clean.

428 Waxgrove Rd., Selma 27576  
919-965-5923

[rvvacation.us](http://rvvacation.us)



## Howell Woods Environmental Learning Center

Campsites and two cabins that sleep eight each are available. This "outdoor" classroom offers hiking, biking, horseback riding, hunting, fishing and educational resources for the public's use.

6601 Devil's Racetrack Rd., Four Oaks 27524  
919-938-0115

[johnstoncc.edu/howellwoods](http://johnstoncc.edu/howellwoods)



## Day Spas

We all need to relax more from the daily grind of work, so... take the time to rejuvenate your mind and body at one of the following spas – even if just for the day! They offer a variety of services, facials, botanicals, and special events for you and your friends! For some extra fun these venues are great for a girl's day out, bachelorette, or pre-wedding party event."



### Botanicals Salon & Spa

12450 Cleveland School Rd., Suite 102, Garner  
919-553-1293  
[botanicals2.com](http://botanicals2.com)

### European Touch of Beauty Waxing Studio & Spa

620 NC Hwy. 42 W., Clayton  
919-491-0067  
[europeantouchofbeauty.com](http://europeantouchofbeauty.com)

### Evolve Medical Spa

101 E Market St. Suite 3C, Smithfield  
919-205-1376  
[Evolve-medspa.com](http://Evolve-medspa.com)

### My Girlfriends Place

121 E. Main St., Clayton  
919-585-1221  
[mygirlfriendsplace-glamourstudio.com](http://mygirlfriendsplace-glamourstudio.com)

### Salon 29:11

226 Venture Dr., Smithfield  
919-938-1100  
[Salon2911.com](http://Salon2911.com)

### Spa Neo Clayton

501 Gateway Dr., Clayton  
919-550-9355  
[spaneo Clayton.com](http://spaneo Clayton.com)



# day Trips

*If you are the adventurous type and enjoy exploring new destinations, but don't know where to start, we have some suggestions.*



## **Stepping Back in Time**

Enjoy this "hands on" history lesson for all ages from the Bentonville Battlefield State Historic Site to the Benson Museum of Local History...and history is always best served with a little taste of local Eastern-style barbecue and sweet tea found along the way!

## **Sweet Sounds of Christmas**

Music is such a significant part of Christmas and nothing will put you in the Christmas spirit as easily as the American Music Jubilee Christmas Show every November and December. Add in some shopping at DeWayne's, Carolina Premium Outlets and more!

## **Country Crossroads Trail**

Johnston County is a community of rural X-roads, farms and churches where locals often meet at country stores for supplies and gossip. Enjoy these "off-the-beaten" path tours featuring Atkinson's Mill, Smith's Family Farm and a picnic at Howell Woods.

## **Grapes...Grains and Gardner!**

Book the Sip & Stay Package and receive a gift bag on check-in with a host of offers like a taste of glamour at the Ava Gardner Museum, great food, and shopping deals! Tour local wineries, breweries, or our distillery along the Beer, Wine and Shine Trail.

For day trip ideas we recommend you experience an area farm to pick fresh produce, shop for antiques in Selma, visit an historic site or museum, drive along the Carolina Campaign Civil War Trail, or take a winery, distillery or brewery tour along the new Beer, Wine, and Shine Trail.

For some more ideas, why not stroll along the Clayton River Walk and the charming downtown for shopping and sweet treats on the Sweet Day in Clayton itinerary. If you are a history buff, traverse the county on the Stepping Back in Time itinerary. You might also try the Grapes, Gardner and Great Deals day trip that combines a stop at Hinnant's Winery, the Ava Gardner Museum, and Carolina Premium Outlets.

*Detail itineraries have been put together on our website for your convenience, [johnstoncountync.org/day-trips](http://johnstoncountync.org/day-trips). If you have a group of 15 or more, our sales office will gladly create a custom itinerary.*

**Just give us a call,  
919-989-TOUR**



# Agri Tourism

THINGS TO DO

*“Agriculture is our heritage and we would love to share it with you!”*

## Agritourism

### Atkinson's Old Grist Mill

Built in 1757, Atkinson's Milling Co. is the only water powered grist mill operating in a four county area. The cornmeal is stone ground and is noted for its quality.

95 Atkinson Mill Rd., Selma 800-948-5707  
[atkinsonmilling.com](http://atkinsonmilling.com)

### Banks Miniature Horse Farm

Home of many fine miniature horses from outstanding bloodlines.

145 Peele Rd., Clayton 919-412-1684  
[banksminiaturehorsefarm.com](http://banksminiaturehorsefarm.com)

### Creekside Farm, LLC

Growing top-quality blueberries and blackberries providing a safe and fun experience for families to pick-your-own.

300 Pine Tree Rd., Selma 919-965-9969  
[creeksidefarmberries.com](http://creeksidefarmberries.com)

### Smith's Nursery and Strawberry Farm

The nursery is open year-round and the pick-your-own seasons bring families and visitors to Smith's for fresh produce and fruits, also enjoy hayrides, a millet maze, bounce houses, special events and fishing.

443 Sanders Rd., Benson 919-934-1700  
[smithsnurseryinc.com](http://smithsnurseryinc.com)

### Tobacco Farm Life Museum

A 6,000 sq. foot exhibit gallery displays artifacts from all aspects of farm life, including a hands-on children's exhibit. A restored farmstead depicts rural life circa the Great Depression.

709 N. Church St., Kenly 919-284-3431  
[tobaccofarmlifemuseum.org](http://tobaccofarmlifemuseum.org)



## Farm Fun & Corn Mazes

### Boyette Family Farms

Home of the Clayton Fear Farm, Lights on the Neuse and Boyette Vineyards. Several agritourism activities for family fun, corporate outings, birthday parties, weddings, and family reunions.

1620 Loop Rd., Clayton 919-553-0016  
[boyettefamilyfarms.com](http://boyettefamilyfarms.com)

### Lazy O Farm

Enjoy farm animals, hayrides, picnic areas and seasonal activities that include a maze; pumpkin patch, egg hunts, ice cream and butter making, Mining Madness, and Paintin' Popsicles.

3583 Packing Plant Rd., Smithfield 919-934-1132

### Sonlight Farms

Enjoy a corn maze, hayride, giant slide, bounce house, playground, games, and more.

293 Bunn Rd., Kenly 252-205-5280  
[sonlightfarmsnc.com](http://sonlightfarmsnc.com)



## Beer, Wine & Shine Trail

### Broadslab Distillery

During tours visitors will learn about the all natural, handcrafted, premium products and how they are made.

4682 NC Hwy 50 S., Benson 919-207-1366

[broadslabdistillery.com](http://broadslabdistillery.com)

### Deep River Brewing Co.

Johnston County's first legal brewery opened in 2013 utilizing locally grown raw materials for their craft beer.

700 W. Main St., Clayton 919-585-2296

[deeperiverbrewing.com](http://deeperiverbrewing.com)

### Double Barley Brewing

Taste a vast variety of craft beers in the lounge area where you will find the patron bar, founders table, high top tables and the outdoor beer garden.

3174 Hwy 70 W., Smithfield 919-934-3433

[doublebarleybrewing.com](http://doublebarleybrewing.com)

### Gregory Vineyards

A great place to relax, taste some wine, or hold a wedding. Take a tour of the picturesque vineyards on this 135-acre working farm. Restaurant on site.

275 Bowling Springs Dr., Angier 919-894-7700

[gregoryvineyards.com](http://gregoryvineyards.com)

### Hinnant Vineyards

Take a tour of the vineyards or enjoy a wine tasting at the largest muscadine vineyard in the state with over 100 sprawling acres. This family winery sits atop picturesque vineyards and offers many different award-winning wines for sale.

826 Pine Level-Micro Rd., Pine Level 919-965-3350

[hinnantvineyards.com](http://hinnantvineyards.com)



Journey along the new Beer, Wine and Shine Trail at your leisure for a taste and tour at one of five locations around the county. Meet the operators, learn their history, enjoy a sip or flight, and tour the facilities where available. Each location is offering special deals, which may be found on the trail brochure, download it on [beerwineshinetrail.com](http://beerwineshinetrail.com)

Find us on Google Play and the iTunes App Store by searching "beer,wine,shine".



# the Arts

THINGS TO DO



**For enjoying the performing arts in Johnston County we encourage you to frequently check our calendar of events.**

## Art Galleries

### Barbara A. Keen Studio

Visit the fine arts studio of artist Barbara Keen, specializing in stained glass and original paintings.

105 W. South Railroad St., Four Oaks **919-963-3190**

### Boon Hill Gallery

Woodcarving designs uniquely created by chainsaws. Custom work is available.

1195 W. Edward St., Princeton **919-344-2819**

[boonhillgallery.com](http://boonhillgallery.com)

### Frank Creech Art Gallery

Dedicated to local artist Frank Creech, this gallery at Johnston Community College rotates local artist exhibits and is open to the public.

245 College Rd., Smithfield **919-209-2112**

[johnstoncc.edu/frank-creech-art-gallery](http://johnstoncc.edu/frank-creech-art-gallery)

### Frank Grubbs Pottery

Local potter specializing in the use of unique materials like horse hair.

101 Coblestone Ct., Smithfield **919-631-9705**

### Right Angles Framing & Art

Art in the gallery changes frequently and includes custom framing, original art, pottery and jewelry by local artisans.

215 E. Main St., Clayton **919-553-2486**

[janetsartshop.com](http://janetsartshop.com)



## Performing Arts

### American Music Jubilee/Rudy Theatre

This Branson-style production entertains visitors and groups with musical delights from '50's rock 'n' roll to classic and contemporary country, gospel, and a stirring patriotic tribute. The popular Christmas show starts early November and runs through the week of Christmas.

300 N. Raiford St., Selma **877-843-7839**

[amjubilee.com](http://amjubilee.com)

### Neuse Little Theatre

Neuse Little Theatre has been a vital part of the cultural heritage in Smithfield since 1974, performing five diverse productions a year. Visit the website for the new season's performance schedule.

104 S. Front St., Smithfield **919-934-1873**

[neuselittletheatre.org](http://neuselittletheatre.org)

### Paul A. Johnston Auditorium

Located less than 1 mile off I95 at exit 95, the facility includes a 1,007 seat performing arts auditorium. Enjoy the annual Performing Arts Concert Series, CMS 'Where Stars Get Their Start', and special presentation performances throughout the year.

245 College Rd., Smithfield **919-209-2099**

[jccperformingarts.com](http://jccperformingarts.com)

### The Clayton Center

This 600-seat performing arts center has superb acoustic quality and provides an intimate environment for nationally touring artists.

111 E. Second St., Clayton  
919-553-3152  
[theclaytoncenter.com](http://theclaytoncenter.com)



### The FlipSide

Live music on weekends, dining, outdoor seating, and open mic Karaoke.

408 E. Second St., Clayton 919-553-0123  
[theflipsideclaytonnc.com](http://theflipsideclaytonnc.com)

### W. J. Barefoot Auditorium

Home to the Benson Little Theatre, the venue offers a 330-seat performing arts auditorium perfect for concerts, assemblies, pageants, and theatrical productions. Available for public and private rental.

303 E. Church St., Benson 919-894-3553  
[townofbenson.com/2186/WJ-Barefoot-Auditorium](http://townofbenson.com/2186/WJ-Barefoot-Auditorium)

## Comedy

### The Comedy Zone

The premier comedy club in Clayton providing huge laughs every Friday-Saturday night.

8928 US Hwy 70 W., Clayton 919-243-2547  
[comedyzoneclayton.net](http://comedyzoneclayton.net)

## Create Your Own Art

### Pottery Camp

With our pottery, our paint and your imagination, you're sure to have a masterpiece! Available for birthdays, group outings, ladies or family night, and other special events.

12981 US Hwy 70, Clayton 919-550-3861  
[potterycamp.com](http://potterycamp.com)

### Wine and Design Clayton

Painting classes taught by local artist who will lead you step-by-step in creating your masterpiece as you sip on your favorite wine.

120 Flowers Pkwy, Ste. 102, Clayton 919-359-1619  
[wineanddesign.com/clayton](http://wineanddesign.com/clayton)



## Cinemas

### Howell Theatre

Step back in time at this nostalgic four screen theatre built in the 1930's. \$4 for everyone.

141 S. Third St., Smithfield 919-938-1201  
[howellmovies.com](http://howellmovies.com)

### Smithfield Cinemas

Ten screen cinema featuring Real D 3D, stadium seating, digital sound and projection, wall-to-wall screens and a game room.

175 S. Equity Dr., Smithfield 919-934-5300  
[smithfieldcinemas.net](http://smithfieldcinemas.net)

## Ava Gardner

Ava Gardner was born just seven miles east of Smithfield -- and remains today one of Hollywood's most beloved stars. Experience her rise to fame from a local country girl to one of Hollywood's film goddesses. Ava's husbands included Mickey Rooney, Artie Shaw, and Frank Sinatra. She starred in more than 59 movies with several film icons, such as Clark Gable, Grace Kelly and Gregory Peck. The museum features her relationships with other stars with artifacts from Sinatra, Kelly, Peck, John Huston and others.

Upon arriving at the museum located in Historic Downtown Smithfield, visitors will be greeted with a 15-minute introductory video on Ava's life which just begins to tell her story. There are sixteen permanent exhibits that chronicle her early childhood through her attending Atlantic Christian College (now Barton College in Wilson)... and each display moves you along through her discovery by MGM, movie career, marriages, and life in London and Spain. There are three glass cases filled with movie costumes and personal belongings of Ava's and the Tom Banks Gallery holds a collection of portraits painted by Bert Pfeffier, a Dutch artist who donated his vast collection to the museum in 2001.



Admission: \$10 adults; \$9 seniors, military, groups of 15 or more, teens; \$6 children ages 6-12. Merchandise is available for purchase at the museum and online.

# History & Heritage

THINGS TO DO

**Throughout the year our museums host special events and programs you will find educational and fun for the entire family.**



## Museums

### Ava Gardner Museum

Home to an amazing collection of costumes, photos, and personal effects of screen legend Ava Gardner. Experience her rise from a local country girl to one of Hollywood's most famous film goddesses. Ava Gardner's grave site is located nearby in Sunset Memorial Park. Hours Monday-Saturday 9-5, Sunday 2-5pm.

325 E. Market St., Smithfield 919-934-5830  
[avagardner.org](http://avagardner.org)

### Benson Museum of Local History

Visitors will see exhibits on a variety of subjects including farming, home life, local artists, merchants, State Singing Convention, Benson Mule Days, country doctors plus much more. Hours: Wed-Thurs 11am-3pm, Fri-Sat 10am-3:30pm.

102 W. Main St., Benson 919-894-1266  
[townofbenison.com/2209/museum](http://townofbenison.com/2209/museum)

### Bentonville Battlefield State Historic Site

The Battle of Bentonville, fought March 19-21, 1865, was the last full-scale action of the Civil War in which a Confederate army was able to mount a tactical offensive. Tour the nearby Harper House, which served as a makeshift hospital, driving pull-offs, Confederate cemetery and union earthworks trails. All year hours: Tuesday - Saturday 9-5 Closed Sunday - Monday.

5466 Harper House Rd., Four Oaks 910-594-0789  
[nchistoricsites.org/bentonvi](http://nchistoricsites.org/bentonvi)

### Blue Gray Scenic Byway

Follow the path of General Sherman as he marched from Bentonville to Goldsboro after the battle of March 1865. Begin the winding byway at I-95, Exit 90 on US 701 South, take left turn on Devils Racetrack Road. See page 120 in the linked PDF file (linked below.)

Four Oaks NC, I-95 Exit 90  
[ncdot.gov/download/travel/scenic\\_byways.pdf](http://ncdot.gov/download/travel/scenic_byways.pdf)

### Boyette Slave and Schoolhouse

This one-room log house of hand-hewn planks is held together by full dove-tail notches and pegs and is listed in the National Register of Historic Places.

NC Hwy 222, Glendale Rd., Kenly 919-284-3431 (for directions)

### Hastings House c. 1854

Built in 1854 for William Hastings, the house served as the pre-battle command office for Confederate General Joseph E. Johnston as he engaged General Sherman at the Battle of Bentonville in March 1865. 200 S. Front St., Smithfield 919-934-0887

### Johnston County Heritage Center

An extensive collection of public records and genealogy materials to research the history and culture of Johnston County and its people. Rotating exhibits are located in the museum on the first floor. 241 E. Market St., Smithfield 919-934-2836  
[jcheritagecenter.org](http://jcheritagecenter.org)

### Kenly Area Historical Society

Museum on Kenly's history, its people, buildings and homes. 105 W. Second St., Kenly 919-284-3591

### Max G Creech Selma Historical Museum

This museum collects, preserves, catalogs, and displays articles of local significance to Selma, NC.

104 W. Anderson St., Selma 919-631-3767



### Selma Historic Union Station/ NC AMTRAK

This 1924 train station was completely restored in the Fall of 2002. Enjoy exhibits and memorabilia on rail history and the Town of Selma.  
500 E. Railroad St., Selma 919-965-6971  
[ncbytrain.org/destinations/stations.html?id=selma](http://ncbytrain.org/destinations/stations.html?id=selma)

### Smithfield High School History Room

This school building c. 1913, showcases school memorabilia from 1903-1969. Open Mon-Fri 8am-4pm.  
501 S. Second St., Smithfield 919-934-4361  
[shs1903-1969.org/museum.html](http://shs1903-1969.org/museum.html)

### Tobacco Farm Life Museum

6,000 sq. gallery displays artifacts from all aspects of farm life, with hands-on children's exhibit and a restored farmstead, main house, detached kitchen, smoke house, tobacco barn, 1890s one-room school house and reproduction pack house. Hours: Tues-Sat 9:30am-5pm.  
709 N. Church St., Kenly 919-284-3431  
[tobaccofarmlifemuseum.org](http://tobaccofarmlifemuseum.org)



## North Carolina Civil War

### The Carolinas Campaign



After making his famous "March to the Sea" to Savannah, Ga., in late 1864, Union Gen. William T. Sherman cast his eyes northward toward the Carolinas and a possible link-up with Gen. U.S. Grant, who then was tightening his noose around Gen. Robert E. Lee at Petersburg, Va. Travel Johnston County through a series of trail markers depicting the history of the last days of the war.

Brochures available by calling **800-441-7829**, or follow along via the website, <http://www.civilwartraveler.com/EAST/NC/CarolinasCampaign.html>

### Battle of Bentonville (March 19–21, 1865)

5466 Harper House Road, Four Oaks, site offers additional driving pull-offs.

### "Merging of the Armies"

Trails sign 1 mile north of the state battlefield visitor center at Harper House and Bass roads.

### Village of Bentonville

Trails sign 3 miles north of the state battlefield visitor center on Devil's Racetrack Road.

### Hannah's Creek Bridge

Trails sign 4 miles north of the state battlefield visitor center on Devil's Racetrack Road at the Howell Learning Center.

### Confederate Line of March

Trails sign 7 miles north of the state battlefield visitor center on Devil's Racetrack Road.

### Union Line of March

Trails sign at the North Carolina Highway Patrol station on Route 301, 0.5 mile north of I-95.

### Hastings House

Trails sign at the corner of Front and East Johnston streets in Smithfield.

### Occupation of Smithfield

Trails sign at the Johnston County Courthouse, Second and Market streets.

### Mitchener Station

Trails sign at the corner of Buffalo and Old Beulah roads, 1.5 miles north from the Route 70 bypass, near Selma.

### "Flag of Truce"

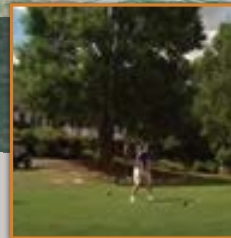
Trails sign in Town Park at the corner of O'Neil and Main Streets, Downtown Clayton.

# Recreation

THINGS TO DO



*If your ambitions while on vacation include getting close to the land and enjoying the great outdoors, Johnston County has many options to consider.*



## Boating, Fishing, Kayaking

### Gar-Gut Canoe Landing

Located at Howell Woods landing offers an egret spot for canoes and kayaks, with no-trace camping, and fishing platform.

6601 Devil's Racetrack Rd., Four Oaks 919-938-0115  
[johnstoncc.edu/howellwoods](http://johnstoncc.edu/howellwoods)

### Langdon's Fishing

Two ponds available for fishing. \$2.00 per day per person, children under 10 years-old, free with adult.

664 Cornwallis Rd., Cleveland Township 919-779-0207

### Neuse Adventures Canoe & Kayak Rentals

2 hour and 5 hour canoe trips along the scenic Neuse River. Groups welcome. Trips are self-guided unless a guide is reserved.

2975 Covered Bridge Rd., Clayton 919-553-3295  
[neuseadventures.com](http://neuseadventures.com)

### Richardson's Bridge River Access

Launch boats into the Neuse River or fish from the bank.

1592 Richardson Bridge Rd., Princeton 919-707-0010  
[ncpaws.org/wrcmapbook/baa.aspx](http://ncpaws.org/wrcmapbook/baa.aspx)

### Smithfield Boat Ramp

Fish from the banks of the Neuse River, and put in motorized boats, kayaks or canoes for trips on the river.

200 N. Front St., Smithfield 919-934-2148  
[ncpaws.org/wrcmapbook/baa.aspx](http://ncpaws.org/wrcmapbook/baa.aspx)



## Golf

### Cardinal Country Club

A semi-private facility featuring tall pines, canals, ponds and bunkers to create a challenging course. The signature hole is #18, a 580-yard, par 5, with a dogleg left fairway.

363 Parrish Memorial Rd., Selma 919-284-3647  
[golfnow.com/courses/1032999](http://golfnow.com/courses/1032999)

### Country Club of Johnston County

Enjoy the fantastic views of Holt Lake while playing golf at this 18-hole, 6800 yard course designed by Ellis Maples. The clubhouse is available for event rentals.

694 Country Club Rd., Smithfield 919-934-4166  
[ccjohnstoncounty.com](http://ccjohnstoncounty.com)

### Pine Hollow Golf Club

18-hole, par-71 golf course measures 6,333 yards from the back tees with Bermuda fairways. Designed by Maurice Brackett/Bob Moore enjoy the driving range, practice green and pro shop.

3300 E. Garner Rd., Clayton 919-553-4554  
[pinehollowgolf.com](http://pinehollowgolf.com)

### Reedy Creek Golf Course

Designed by Gene Hamm, this 18-hole, par 72 course is built upon rolling farmland. It has been consistently rated as one of Eastern North Carolina's top public courses. Driving range, snack bar, and grill.

585 Reedy Creek Rd., Four Oaks 919-934-7502  
[reedycreekgolf.com](http://reedycreekgolf.com)

### Riverwood Golf & Athletic Club

Championship 7,200 yard layout set in the beautiful rolling terrain along the Neuse River. Golf Course Designer, David Postlethwait, created 27 holes of dramatic golf to play.

400 Riverwood Dr., Clayton 919-550-1919  
[rgac.com/rw-golf.html](http://rgac.com/rw-golf.html)



*The weather is mild most all year long, so load up your bike or pack a picnic for a hike along the Neuse River!*



#### **The Neuse Golf Club**

John LaFoy designed this 7,000-yard course which is consistently ranked in the top 5 in the state for conditions and a Golf Digest 4.5 star layout. With 6 sets of tees to choose from this course accommodates any skill level.

918 Birkdale Dr., Clayton 919-550-0550  
[neusegolf.com](http://neusegolf.com)

### *Gardens & Forests*

#### **Arboretum at JCC**

Enjoy walking trails and Southern Gardens with year round blooms and greenery.

1240 E. Market St., Smithfield 919-938-0115  
[johnstoncc.edu/arboretum](http://johnstoncc.edu/arboretum)

#### **Clemmons Educational State Forest**

Enjoy trails, exhibits, and "talking trees" among a mix of pine and hardwood vegetation. This managed forest offers a pleasant rolling terrain highlighted by streams and rock outcroppings where visitors may hike and picnic. Open March to November. Closed on Mondays.

2411 Old US 70 W., Clayton 919-553-5651  
[ncesf.org/clemmons.html](http://ncesf.org/clemmons.html)

#### **Flower Hill**

25-acre nature preserve managed by Triangle Land Conservancy protects rare populations of rhododendron, galax, and other montane plants. Pink Catawba rhododendron blooms in early May.

9038 Flower Hill Rd., Middlesex 919-833-3662  
[triangleland.org/what-we-do/nature-preserves/flower-hill-nature-preserve](http://triangleland.org/what-we-do/nature-preserves/flower-hill-nature-preserve)

#### **Howell Woods Environmental Learning Center**

This 2,800 acre outdoor classroom has 25 miles of unpaved roads and trails for horseback riding, mountain biking, bird watching, long-distance hiking, no-trace camping and fishing. Reservations are required for horseback riding, camping and fishing.

6601 Devil's Racetrack Rd., Four Oaks 919-938-0115  
[johnstoncc.edu/howellwoods](http://johnstoncc.edu/howellwoods)

### *Hunting*

#### **Carolina Razorback Outfitters**

Located along the Neuse river, clients experience some of the finest hunting lands that eastern North Carolina has to offer.

4230 Devil's Racetrack Rd., Four Oaks  
[carolinarazorbackoutfitters.com](http://carolinarazorbackoutfitters.com)

#### **Howell Woods Environmental Learning Center**

A popular hunting spot for wild pig, whitetail deer, and wild turkey. Reservations required.

6601 Devil's Racetrack Rd., Four Oaks 919-938-0115  
[johnstoncc.edu/howellwoods](http://johnstoncc.edu/howellwoods)

# Town Parks and Recreation Facilities



## Benson Parks & Recreation

<b>1204 N. Johnston St., Benson</b>	<b>919-894-5117</b>	<b><a href="http://townofbenison.com/2172/Facilities-Locations">townofbenison.com/2172/Facilities-Locations</a></b>
<b>Benson Municipal Park</b> 1204 N. Johnston St.	Facilities include baseball and softball fields, batting cages, volleyball court, horseshoe pits, tennis courts, shuffleboard courts, and picnic shelter for 32-40 people.	
<b>Benson Singing Grove</b> 400 E. Main St.	Home to the annual Benson Mule Days and the Benson State Singing Convention the park offers a stage, picnic shelter for 80-100 people with grills and a playground for children ages 2-12.	
<b>Mitchell Nance Athletic Complex &amp; Picnic Shelter</b> 300 N. Lee St.	Complex includes soccer fields, softball field, picnic shelter, and playground for children ages 2-12.	
<b>P.K. Vyas Community Park</b> 312 S. Lee St.	Facility includes adult baseball field, little league field, t-ball field, football/pee wee soccer field, outdoor basketball court and playground.	

## Clayton Parks & Recreation

<b>715 Amelia Church Rd., Clayton</b>	<b>919-553-1550</b>	<b><a href="http://townofclaytonnc.org/Parks-and-Recreation">townofclaytonnc.org/Parks-and-Recreation</a></b>
<b>All-Star Park</b> 400 Front St.	Playground equipment, basketball court, pavilion/restroom.	
<b>Clayton Community Center</b> 715 Amelia Church Rd.	Center includes a gymnasium, elevated walking track, multi-purpose room, pottery room, and fine arts room.	
<b>Clayton Community Park</b> 1075 Amelia Church Rd.	42-acre park facilities include playgrounds, picnic shelters, tennis courts, athletic fields, bocce courts, sand volleyball courts, 1/2-mile walking trail, and an amphitheater.	
<b>Clayton Municipal Park</b> 325 McCullers Dr.	Ballfield, basketball court, tennis court, horseshoe pits, and fenced in playground.	
<b>Clayton River Walk</b> 2686 Covered Bridge Rd.	This 4-mile trail in Clayton is part of the Mountains-to-Sea Trail and also connects to Clayton's Sam's Branch Greenway Trail.	
<b>East Clayton Community Park</b> 1774 Glen Laurel Rd.	66-acre park with picnic pavilion, soccer, baseball and multipurpose field, and a 1-mile partially paved walking trail.	
<b>East Clayton Dog Park</b> 2027 Glen Laurel Rd.	The park has two separate enclosures, one for small dogs under 20 pounds and the one-acre large dog area which include rocks, a tunnel and benches. Water, wash station, trash containers, and picnic tables.	
<b>Legend Park Mountain Bike Trail</b> 550 City Rd.	From beginner to advanced riders, this eight-mile bike trail offers rock gardens, boulders, jumps, and bridges. Trails are multi-directional.	
<b>Sam's Branch Greenway Trail</b> 1358 O'Neil St.	Trail head entrance to the Clayton Greenway, a 1.25 mile section that links up to the Mountains-to-Sea Trail/ Clayton River Walk. Great for hiking, biking, and viewing nature along the Neuse River.	

## Kenly Parks & Recreation

<b>406 S. College Ave., Kenly</b>	<b>919-284-2116</b>	<b><a href="http://townofkenly.com/town-government/kenly-parks-recreation">townofkenly.com/town-government/kenly-parks-recreation</a></b>
<b>Kenly Area Parks &amp; Recreation Center (KAPARC)</b> 406 S. College Ave.	KAPARC facility includes ballfields, gymnasium, soccer complex, batting cages, and a half-mile paved walking trail.	



## ***Pine Level Parks & Recreation***

**306 E. Brown St., Pine Level**

**919-965-2284**

**[pinelevel.org/departments/parks-rec](http://pinelevel.org/departments/parks-rec)**

**Sam Godwin Recreation Park**  
20 E. Crescent St.

Facility includes baseball/softball fields, basketball court, soccer field, community park, and picnic tables.

## ***Town of Princeton***

**503 Dr. Donnie H. Jones, Jr. Blvd. W., Princeton 919-936-8171 [myprincetonnc.com](http://myprincetonnc.com)**

**Princeton Community Park**  
116 Holts Pond Rd.

Family friendly park with playground and swings, picnic tables with shelter, and 1 mile lighted walking trail.

## ***Selma Parks & Recreation***

**305 N. Pollock St., Selma**

**919-965-9841**

**[selma-nc.com/parksandrecreation](http://selma-nc.com/parksandrecreation)**

**Brack Wilson Park**  
1118 W. Oak St.

Park includes a baseball field, playground area, covered picnic shelter, and outdoor basketball courts.

**Richard B. Harrison Gymnasium  
& Blackley Athletic Park**  
601 W. Noble St.

Facilities include outdoor basketball court, gymnasium, and baseball field.

## ***Smithfield Parks & Recreation***

**600 Booker Dairy Rd., Smithfield**

**919-934-2148**

**[smithfield-nc.com/page/parks\\_home](http://smithfield-nc.com/page/parks_home)**

**Buffalo Creek Greenway**  
600 Booker Dairy Rd.

3-mile greenway travels along the Spring Branch to the Neuse River Walk at Smithfield Commons. Part of the Mountains-to-Sea Trail through Johnston County, the ten foot wide path accommodates hikers, runners and bikers.

**Smithfield Recreation  
and Aquatics Center**  
600 Booker Dairy Rd.  
919-934-1408

Enjoy the 8-lane competition sized swimming pool with adjacent kiddie splash pool, double gymnasium, elevated walking track, racquetball courts, fitness room and banquet room. Day passes for visitors available. [sraonline.com](http://sraonline.com)

**Smithfield Community Park**  
600 Booker Dairy Rd.

Park offers softball fields, baseball field, football field, soccer fields, tennis courts, basketball courts, walking trails, shuffleboard, bocce, two playgrounds, and picnic shelters.

**Smithfield Town Commons**  
150 S. Front St.

Take a stroll along the Neuse River Walk in historic Smithfield's Town Commons. Watch nature, go fishing, picnic, or launch your boat. Amphitheater is available to rent.



## *Indoor & Outdoor Activities*

### **Bungalow Bounce**

Variety of inflatable structures for children to play, exercise and develop their gross motor skills.

101 Best Wood Dr., Clayton **919-359-1133**

[bungalowbounce.com](http://bungalowbounce.com)

### **Carolina High Hot Air Balloon Company**

Enjoy the picturesque countryside in the hot air balloon "Spellbound Spirit II."

I-95/I-40 Interchange, Benson **919-894-5893**

[flycarolinahigh.com](http://flycarolinahigh.com)

### **Lil' Black Creek Farm**

This 150-acre farm has trails for horseback riding, hiking, golf driving range, and paintball field.

3444 Plain View Church Rd., Angier **919-306-0167**

### **McCoy Paintball**

Fast action paintball fun on three fields. Equipment and rentals on site. Parties welcome.

1947 Progressive Church Rd., Princeton **919-936-2025**

[mccoypaintball.com](http://mccoypaintball.com)

### **Monster Indoor Batting Cages**

Indoor batting facility 55ft and 70ft tunnels and two soft toss areas.

320 W. Main St., Clayton **919-585-4990**

[monsterbattingcages.com](http://monsterbattingcages.com)

### **Pelican's SnoBalls & Batting Cages**

Take a few swings in our batting cage followed by a tasty snoball. Fenced playground area for children.

9180 Cleveland Rd., Clayton **919-614-0293**

[pelicansnoballs.com](http://pelicansnoballs.com)

### **Rainbow Lanes Family Fun Center**

45,000 sq.ft. of family-friendly fun with 32 bowling lanes, huge arcade, billiards room, snack bar, and party rooms!

850 NC Hwy 42 W., Clayton **919-553-4386**

[rainbowlanesclayton.com](http://rainbowlanesclayton.com)

### **Springhill Outfitters**

Archery shooting range with lessons available for beginners to advanced shooters.

773 Seafood House Rd., Selma **919-351-0764**

[springhilloutfitters.com](http://springhilloutfitters.com)

## *Escape Rooms*

### **Conundrum Escapes**

41-A Technology Dr., Garner **919-728-1401**

[conundrumescapes.com](http://conundrumescapes.com)

### **Ready-Set-Escape**

1304 D W. Market St., Smithfield

[ready-set-escape.com](http://ready-set-escape.com)

## *Motor Sports*

### **GALOT Motorsports Park**

This new state of the art racing facility features a temperature controlled racing surface, onsite restaurant, 9,000-seat stands for a variety of racing events, truck shows/pulls and concerts. GALOT has many events throughout the year, check their website for dates and times.

555 Dragstrip Rd., Benson **919-894-1662**

[galotmotorsportspark.com](http://galotmotorsportspark.com)

### **Southern National Motorsports Park**

This NASCAR sanctioned venue is a quarter-mile oval asphalt track with 17 degree turns featuring Saturday races March to October.

8071 Newsome Mill Rd., Lucama **919-284-1114**

[smpark.com](http://smpark.com)

# Transportation Services

## Airports

### Johnston County Regional Airport

ILS equipped 5,500 ft. runway. JNX on-field services include aircraft refueling, engine, airframe and avionics repair. After hours call 919-796-3688.

3149 Swift Creek Rd., Smithfield 919-934-0992  
[jnx-airport.com](http://jnx-airport.com)

### Raleigh Durham International Airport

Over 450 flights daily located 35 miles from Smithfield, I-40, Exits 284 & 285.

1000 Trade Dr., RDU Airport 919-840-2123  
[rdu.com](http://rdu.com)

## Bus Transportation

### Greyhound and Trailways

Bus stop only. Tickets available online.

600 S. Bright Leaf Blvd., Smithfield 800-231-2222  
[greyhound.com](http://greyhound.com)

## Car Rental

### Enterprise Rent-A-Car

831 N. Bright Leaf Blvd., Smithfield 919-938-2562  
[enterprise.com](http://enterprise.com)

## Taxi Service

### Tele Taxi

1006 S. Pollock St., Selma 919-202-4511

### Yellow & Checker Cab Co.

504 E. Market St., Smithfield 919-934-2552

## Train

### Selma Historic Union Station/ NC AMTRAK

500 E. Railroad St., Selma 1-800-USA-RAIL  
[ncbytrain.org/destinations/stations.html?id=selma](http://ncbytrain.org/destinations/stations.html?id=selma)

## Travel Agents

### A Travel Odyssey

315 S. Third St., Smithfield 919-934-1862

### Small World Travel & Tours, LLC

101 E. Hill St., Benson 866-894-1537  
[gotsaltlife.com](http://gotsaltlife.com)

## Specialty

### Eddie Bee's Executive Coach

Professional chauffeur specializing in Johnston County Airport transportation, corporate and personal transport and door to door service.  
[eddiebees.com](http://eddiebees.com) 919-553-1791

### J & L Carriage

Horse and carriage available for weddings, military funerals and special events.

[jllcarriage.com](http://jllcarriage.com) 919-936-2586

### JoCo Limo

Specializes in delivering luxury limosine service at affordable prices.  
[joco-limo.com](http://joco-limo.com) 919-587-6069

### Shenanigans Party Bus

Party bus available for all types of events: weddings, parties, tailgating.

[shenaniganspartybus.com](http://shenaniganspartybus.com) 919-243-2209

### Starship Charter & Travel

Full service transportation and charter travel service.  
[starshipcharterandtravel.com](http://starshipcharterandtravel.com) 919-279-7837

## RV & Truck Services

### Big Boys Truck Auto Plaza

595 Bagley Rd., Kenly 919-284-4046  
[natsn.com/tstops/kenly\\_nc.htm](http://natsn.com/tstops/kenly_nc.htm)

### Blue Beacon Truck Washing

923 Johnston Pkwy., Kenly 919-284-6670  
[bluebeacon.com/details/Kenly](http://bluebeacon.com/details/Kenly)

### Cummins Atlantic, Inc.

Services and amenities include complete bumper to bumper repair for recreational vehicles, motorcoaches and trucks.

350 Cummins Dr., Kenly 919-284-9111  
[salesandservice.cummins.com](http://salesandservice.cummins.com)

### Flying J Travel Plaza

Facility offers 145 parking spaces, 9 showers, game room, J scales, LP filling, RV dump with convenience store, laundry and drivers lounge.

1800 Princeton Kenly Rd., Kenly 919-284-4548  
[pilotflyingj.com/stores/683](http://pilotflyingj.com/stores/683)

### Kenly 95 Petro

Open 7 days a week, 24 hours with diesel fuel, oil changes and minor repairs, 15 showers, laundry facilities, seven restaurants, CAT scale, dump station, ATM machine and travel store with apparel, gifts and truck accessories.

923 Johnston Pkwy., Kenly 919-284-5121  
[kenly95.com](http://kenly95.com)



# Shopping Old & New



*Visitors from far and wide have heard JoCo is home to eastern North Carolina's largest selection of outlet shopping.*

## *Antiques, Flea Markets, & Thrift Stores*

### **A Matter of Record**

126 S. Raiford St., Selma **919-965-2640**

### **Benson Flea Market & Antiques**

10 J. Lee Rd., Benson **919-207-2222**

### **Brightleaf Flea Market**

2320 S. Bright Leaf Blvd., Smithfield **919-934-4111**

[brightleafleamarket.com](http://brightleafleamarket.com)

### **Country Boy Antiques & Bottle Shop**

104 E. Anderson St., Selma **919-345-6658**

### **Cousins Antiques**

14119 Buffalo Rd., Archer Lodge **919-669-9743**

### **Farmhouse Vintage Treasures**

208 E. Main St., Benson **919-864-6068**

### **Four Oaks Auction Gallery**

102 S. Main St., Four Oaks **919-963-3482**

[4oaksauktion.com](http://4oaksauktion.com)

### **G & L Auctions**

800-A Braswell Rd., Smithfield **919-631-0803**

### **Harper's Flea Market Mall**

1410 S. Bright Leaf Blvd., Smithfield **919-989-7280**



### **Keepsake Corner**

110 N. Raiford St., Selma **919-975-0407**  
[keepsake-corner.com](http://keepsake-corner.com)

### **Korner Flea Market**

301 S. Wall St., Benson **919-701-1065**

### **Morgan's On Main**

119 E. Main St., Benson **919-701-1240**

### **Peddlers Thrift Mall**

5533 Hwy 42 W., Ste. D80, Garner **919-661-6848**

### **Pink Flamingo Thrift & Gift**

415 E. Second St., Clayton **919-550-0166**

### **Rebecca's Vintage Mart**

103 W. Main St., Benson **910-849-6302**

### **Reid's Country Sampler**

109 N. Raiford St., Selma **919-965-7299**

### **Selma Cotton Mill Antique Flea Market**

1105 W. Anderson St., Selma **919-202-0794**

### **Trackside Antiques & Collectibles**

107 E. Railroad St., Selma **919-202-4878**

### **Treasury Antiques**

100 S. Raiford St., Selma **919-965-5335**

### **TWM Antique Mall**

112 S. Pollock St., Selma **919-965-6699**  
[twmsantiquemall.com](http://twmsantiquemall.com)

## Country Stores

### CE Barnes Store

13726 Buffalo Rd., Clayton 919-553-6551

### Clayton General Store

10522 Hwy 70 Bus., Clayton 919-585-2288

### Ronnie's Country Store

280 US Hwy 701 S., Four Oaks 919-989-3045

### Sandh's Cleveland Emporium

9005 Cleveland Rd., Clayton 934-4898

### Stanfield's General Store

105 N. Main St., Four Oaks 919-963-9607

[stanfieldsgeneralstore.com](http://stanfieldsgeneralstore.com)

## Farms, Markets & Produce

### Beasley's Berries

Pre-picked and pick your own strawberries April - June.

428 Peele Rd., Clayton 919-553-6928

### Blue Dragonfly Cut Flower Farm

Locally grown fresh cut flowers available from April to October.

6018 Little Creek Church Rd., Clayton 919-389-9057

[bluedragonflyflowers.com](http://bluedragonflyflowers.com)

### Boyette Vineyards

Pick your own NC grapes.

1620 Loop Rd., Clayton 919-553-0016

[boyettevineyards.com](http://boyettevineyards.com)

### Clayton Farm and Community Market

Market dedicated to locally grown foods.

348 E. Main St., Clayton  
[cfcmnc.org](http://cfcmnc.org)

### Creekside Farm, LLC

Growing top-quality blueberries and blackberries providing a safe and fun experience for families to pick-your-own.

300 Pine Tree Rd., Selma 919-965-9969

[creeksidefarmberries.com](http://creeksidefarmberries.com)

### Crooked Row Produce

Offers fresh produce along with other seasonal needs such as hanging baskets, pumpkins, gourds, mums, Christmas trees, and more.

1600 S. Pollock St., Selma 919-369-5674

### J. Roland Wood Farms

A family, hands-on business serving individual customers with a variety of sweet potatoes.

2500 Beasley Rd., Benson 919-894-2318

### Jacar Produce

Produce and organic egg farm.

1718 Powhatan Rd., Clayton 919-901-3323

### L & G Farm Stand

Local produce and nursery center opening seasonally.

10236 Cleveland Rd., Clayton 919-553-3525

### Lee Farms

Specializing in growing, packing and shipping quality hand-brushed sweet potatoes.

2775 Hockaday Rd., Four Oaks 919-963-6071

### Lee's Produce and Garden Center

Open 7 days from Mid March - December offering fresh local produce, seasonal plants, and Christmas trees, wreaths and bows.

401 W. Main St., Clayton 919-550-8425

[leesgardenctr.com](http://leesgardenctr.com)

### Mountain Branch Farm

Specializing in Red Cedar, Virginia Pine and White Pine. Christmas Trees Thanksgiving Day through Christmas Eve 8am till dark.

1660 Cornwallis Rd., Garner 919-268-3112

### Northlake Christmas Trees & Nursery

Open Thanksgiving-Christmas with trees including: Pines, Spruces, Firs, and Cypresses. Customized wreath orders and ball/burlapped live trees available upon request.

7326 Meadowbrook Rd., Benson 919-894-3524

[northlakechristmastreenursery.com](http://northlakechristmastreenursery.com)

### Smith's Nursery and Strawberry Farm

Open year-round with a produce stand and pick-your-own seasons. Strawberries: April-June, blueberries: June-July, pumpkins & mums: September-October.

443 Sanders Rd., Benson 919-934-1700

[smithsnurseryinc.com](http://smithsnurseryinc.com)

### Thompson Orchard

Visit us each summer for homegrown peaches, produce, veggies, and many other goodies!!

4301 US Hwy 701 S., Four Oaks 919-934-8434

[thompsonorchards.com](http://thompsonorchards.com)

### Toad Song Farm

Herb plants, bedding plants, lavender crafts, nature walks, lavender labyrinth, workshops and much more.

14765-D Buffalo Rd., Clayton 919-553-2992

[toadsongfarm.com](http://toadsongfarm.com)

### WDW Strawberry Farm

Pre-picked and pick-your-own strawberries and other produce.

3510 Progressive Church Rd., Princeton 919-921-0104

### Wild Onion Farms

Fresh, local, organically grown food.

9999 NC Hwy 222 W., Middlesex 919-284-3113

[wildonionfarms.com](http://wildonionfarms.com)





# CAROLINA PREMIUM OUTLETS®

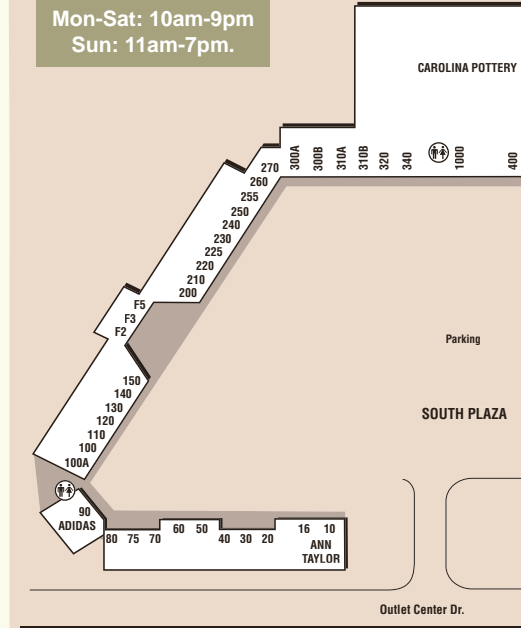
A SIMON CENTER

Carolina Premium Outlets, located off I-95, Exit 95 is the largest outlet center in Eastern North Carolina and is only 30 minutes east of Raleigh. The outlet center features national brands like Coach, Brooks Brothers, Ann Taylor, Banana Republic, The Gap, Polo Ralph Lauren, Tommy Hilfiger, and many others with savings of 25% to 65% every day.

Carolina Premium Outlets has a VIP Shopper Club with exclusive deals. Area hotels offer a Girlfriend's Getaway Package which includes coupon books, spa discounts, hotel deals, and BOGO admission at the Ava Gardner Museum — along with free goodies.

Special events and activities to bring you back time and again include holiday sidewalk sales, the Deer Widow, and the biggest of all – Black Friday Shopping on Thanksgiving night to kick off the Christmas season deals!

The outlet center is open  
**Mon-Sat: 10am-9pm**  
**Sun: 11am-7pm.**



- Suite 90 **Adidas**  
919-209-9763
- Suite 550 **Aeropostale**  
919-989-0154
- Suite 810 **American Eagle Outfitters**  
919-938-3013
- Suite 10 **Ann Taylor Factory Store**  
919-989-7270
- Suite F2 **Auntie Anne's Pretzels**  
919-209-0096
- Suite 610 **Banana Republic Factory Store**  
919-938-1558
- Suite 50 **Bass Factory Outlet**  
919-934-7158
- Suite 300A **Bath & Body Works**  
919-934-1946
- Suite 1237 **Beef Jerky Outlet**  
919-989-1893
- Suite 340 **Bon Worth**  
919-934-7759
- Suite 1213 **Bose**  
919-989-6830

- Suite 1225 **Brooks Brothers Factory Store**  
919-989-6328
- Suite 1000 **Carolina Pottery**  
919-934-1157
- Suite 310A **Carter's**  
919-989-7778
- Suite 450 **Casual Male XL**  
919-989-7751
- Suite 400 **Champion**  
919-989-0199
- Suite 20 **Chico's**  
919-209-0408
- Suite 1223B **Christopher & Banks Outlet**  
919-938-3003
- Suite 510 **Claire's**  
919-989-6966
- Suite 1215 **Clarks**  
919-934-0615
- Suite 1250 **Coach Outlet**  
919-934-9089
- Suite 225 **Cricket Wireless**  
919-934-2202

- Suite 30 **Cros**  
919-934-0073
- Suite 910 **Dairy Queen Grill & Chill**  
919-934-0066
- Suite 250 **Destination Maternity Outlet**  
919-989-8886
- Suite 100 **Direct Tools Factory Outlet**  
919-934-7780
- Suite 520 **Dressbarn**  
919-934-0334
- Suite 110 **Dressbarn Woman**  
919-989-8181
- Suite 1239 **Eddie Bauer Outlet**  
919-989-8570
- Suite 1259 **Fossil**  
919-938-6134
- Suite 720 **Gap Factory Store**  
919-989-7158
- Suite 310B **Gymboree Outlet**  
919-934-2373
- Suite 80 **Haggar Clothing Co.**  
919-989-6244

- Suite 230 **Hanes Bali Playtex**  
919-934-0548
- Suite 440 **Hot Topic**  
919-209-0032
- Suite 1207 **J. Crew Factory**  
919-209-0035
- Suite 320 **Jockey**  
919-989-7676
- Suite 260 **Journeys**  
919-934-5040
- Suite 410 **Justice Factory Store**  
919-209-0840
- Suite 430 **Kay Jewelers Outlet**  
919-938-2444
- Suite 150 **Kitchen Collection**  
919-938-0726
- Suite 500B **Lane Bryant Outlet**  
919-300-4249
- Suite 500 **Levi's Outlet Store**  
919-934-7203
- Suite 850 **Loft Outlet**  
919-209-0230



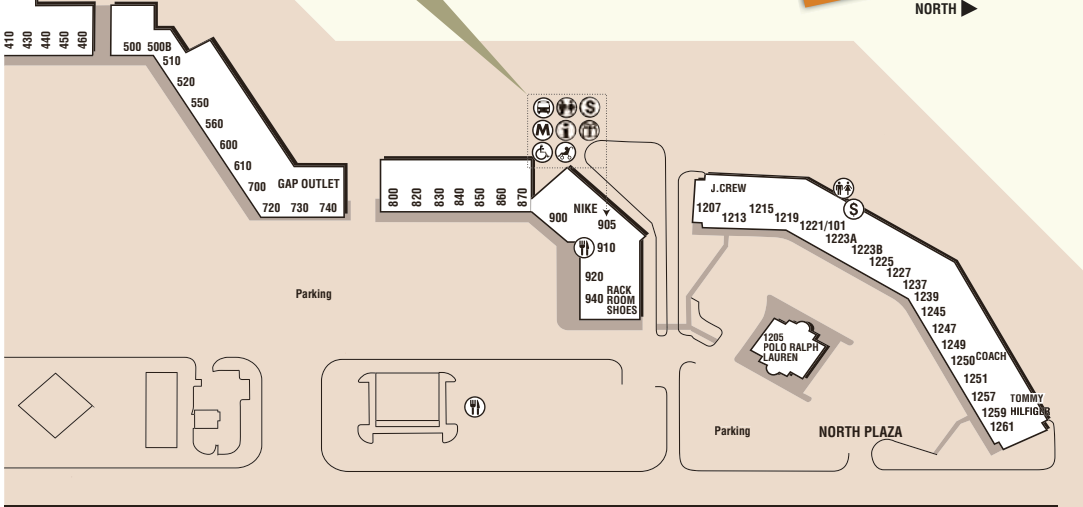
**Carolina Premium  
Outlet Office**

1025 Outlet Center Dr.  
919-989-8757

[premiumoutlets.com/carolina](http://premiumoutlets.com/carolina)



NORTH ▶



- Suite 905 **Mall Management Office**  
919-989-8757
- Suite 460 **Naturalizer**  
919-934-6170
- Suite 140 **Nautica**  
919-934-5070
- Suite F3 **Nestle Toll House Café/  
Red Mango**  
919-938-8146
- Suite 700 **New York &  
Company Outlet**  
919-209-0478
- Suite 900 **Nike Factory Store**  
919-989-6100
- Suite 830 **Nine West Outlet**  
919-209-0762
- Suite 1245 **OshKosh B'gosh**  
919-938-1199
- Suite 255 **PacSun**  
919-934-6660
- Suite 300B **Perfumania**  
919-934-5619

- Suite 1251 **Polo Ralph Lauren  
Children's Factory Store**  
919-934-6999
- Suite 1205 **Polo Ralph  
Lauren Factory Store**  
919-938-6140
- Suite 60 **Popcorn Haven**  
919-934-8033
- Suite 240 **Pro Image Sports**  
919-209-0034
- Suite 940 **Rack Room Shoes**  
919-934-4222
- Suite 1227 **Reebok Outlet**  
919-989-7736
- Suite 130 **Rue21**  
919-209-0767
- Suite 1257 **Samsonite**  
919-989-9506
- Suite 740 **Skechers**  
919-989-2133
- Suite 600 **Southern Attitude**  
919-763-2988
- Suite 1223A **Sunglass Hut**  
919-989-8080

- Suite 560 **Talbots Outlet**  
919-209-0190
- Suite 16 **The Children's  
Place Outlet**  
919-938-0078
- Suite 920 **Timberland**  
919-934-4300
- Suite 1261 **Tommy Hilfger**  
919-989-1940
- Suite 270 **Toys "R" Us Outlet**  
919-938-0030
- Suite 870 **Under Armour**  
919-209-0466
- Suite 75 **Uniform Destination**  
919-989-4084
- Suite 220 **Van Heusen-IZOD GOLF**  
919-934-6354
- Suite 840 **Wilson's Leather**  
919-989-9599
- Suite 100A **Yankee Candle**  
919-938-1188
- Suite 1221B **Zales Outlet**  
919-209-0000





## *Locally Produced Products*

### **Atkinson's Old Grist Mill**

Products include: hush puppy mix, biscuit mix, funnel cake mix, seafood breader, and chicken breading.

95 Atkinson Mill Rd., Selma **800-948-5707**  
[atkinsonmilling.com](http://atkinsonmilling.com)

### **Carolina Packers, Inc.**

Home of the Brightleaf Hotdog, a tradition since 1941!

2999 S. Bright Leaf Blvd., Smithfield **919-934-2181**  
[carolinapackers.com](http://carolinapackers.com)

### **House-Autry Mills**

Cornmeal products including seafood breader, chicken breader, hush puppies and biscuit mix.

7000 US Hwy 301 S., Four Oaks **800-849-0802**  
[house-autry.com](http://house-autry.com)

### **McLamb's Abattoir**

Purchase fresh ground sausage, pork and beef products.

623 Benson-Hardee Rd., Benson **919-894-2587**

### **Miss Debbie's Specialty Apples**

Specialty gourmet caramel apples for any occasion.

Online Shopping **919-464-1502**  
[specialtyapples.com](http://specialtyapples.com)

### **Mule City Specialty Feeds**

Custom livestock feed and over 100 kinds of feed to keep pets and stock animals healthy and strong.

1202 N. Wall St., Benson **919-894-3626**  
[mulecity.com](http://mulecity.com)

### **OIG Custom Furniture and Design**

Custom built furniture and decor.

206 S. Main St., Four Oaks **919-963-3090**  
[ogifurniture.com](http://ogifurniture.com)

### **Popcorn Haven**

Corn is grown and popped fresh in Johnston County.

1025 Outlet Center Dr., Ste. 60, Smithfield **919-989-8033**  
[popcornhaven.com](http://popcornhaven.com)

### **Shamrock's Buzzy Bee**

Locally produced honey and bee products

115 W. South Railroad St., Four Oaks **919-247-6852**  
[shamrocksbuzzybee.com](http://shamrocksbuzzybee.com)

### **Smithfield Ham Shop/ Johnston County Hams**

Country hams, bacon, spiral sliced hams and more.

204 N. Bright Leaf Blvd., Smithfield **919-934-8054**  
[countrycuredhams.com](http://countrycuredhams.com)

### **Stevens Sausage Company**

Country hams, spiral sliced hams, hotdogs and sausage are available for retail and mail order.

3411 Stevens Sausage Rd., Smithfield **800-338-0561**  
[stevens-sausage.com](http://stevens-sausage.com)

## *Outlets*

### **Carolina Apparel & Sport**

Home to Carhartt, Browning, Guy Harvey, Ducks Unlimited, Salt Life and big-man apparel, sizes up to 52.

49 JR Rd., Selma **919-202-0777**  
[carolinaapparel.com](http://carolinaapparel.com)

### **Carolina Premium Outlets**

1025 Outlet Center Dr., Ste. 905, Smithfield **919-989-8757**  
[premiumoutlets.com/carolina](http://premiumoutlets.com/carolina)

### **JR Cigar**

World's largest cigar store!

67 JR Rd., Selma **919-965-5055**  
[jrselma.com](http://jrselma.com)

### **Red River Western Wear**

Western wear and work boots, hard to find sizes and odd items.

49-C JR Rd., Selma **919-965-3337**  
[redriverwesternwear.com](http://redriverwesternwear.com)

### **Soffe - Factory Outlet Store**

High-quality active-wear and collegiate apparel for kids and adults.

49-F JR Rd., Selma **919-965-0062**  
[soffe.com/outlets/smithfield-nc](http://soffe.com/outlets/smithfield-nc)

## *Specialty Shops*

### **DeWayne's**

Garden center, gift shop, jewelry & clothing boutiques.

1575 Outlet Center Dr., Selma **919-202-8471**  
[dewaynes.com](http://dewaynes.com)

### **The Oak City Collection**

Locally made, themed and inspired products.

105 S. Third St., Smithfield **919-810-7472**  
[oakcitycollection.com](http://oakcitycollection.com)

### **Wheelbarrow Home & Gift Gallery**

Housewares, furniture, and gifts imagined, created, crafted, and redeemed in North Carolina.

103 E. Anderson St., Selma **919-965-0280**  
[wheelbarrownc.com](http://wheelbarrownc.com)



# Dining

*Dining can be fast if you need it to be, home-cooking Southern style, or national chains offering steaks, seafood, and American cuisine giving even your “picky” eater something to choose from.*

## BBQ & Southern

### Biscuitville

771 Enterprise Dr., Clayton  
919-550-7444  
[biscuitville.com](http://biscuitville.com)

### Bojangles

11900 US Hwy 70 W., Clayton  
919-550-4175  
12355 NC Hwy 210, Benson  
919-209-0322  
5497 NC Hwy 42 W., Garner  
919-773-9116  
502 N. Pearl St., Princeton  
919-936-0385  
275 US Hwy 70 E., Selma  
919-965-6890  
[bojanglesrdu.com](http://bojanglesrdu.com)

### Charlie's BBQ & Grille

8948 Cleveland Rd., Ste. 104, Clayton  
919-934-0093  
[charliesbbqandgrille.org](http://charliesbbqandgrille.org)

### Cracker Barrel

5199 NC Hwy 42 W., Garner  
919-661-4044  
1109 Outlet Center Dr., Smithfield  
919-989-2140  
[crackerbarrel.com](http://crackerbarrel.com)

### Four Oaks Restaurant & Grill

203 W. Wellons St., Four Oaks  
919-963-2289

### Fred Chason's Grandson's

1273 N. Bright Leaf Blvd., Smithfield  
919-934-4336  
[grandsonsbuffet.com](http://grandsonsbuffet.com)

### Golden Corral

100 Towne Centre Place, Smithfield  
919-989-1125  
[goldencorral.com](http://goldencorral.com)

### Holt Lake BBQ & Seafood

3506 US Hwy 301 S., Smithfield  
919-934-0148

### Lowell Mill Restaurant

595 Bagley Rd., Kenly  
919-284-5141  
[lowellmillrestaurant.com](http://lowellmillrestaurant.com)

### Meadow Village Restaurant

7400 NC Hwy 50 S., Benson  
919-894-5430  
[meadowrestaurant.biz](http://meadowrestaurant.biz)

### Parkside Café

2176-A US Hwy 70-A, Pine Level  
919-965-4100

### Robbins Nest

121 US Hwy 70-A, Selma  
919-965-5522  
[robbinsnestrestaurant.com](http://robbinsnestrestaurant.com)

### Rockin' Comet Diner

11637 US Hwy 70 W., Clayton  
919-550-6060

### Smithfield's Chicken'N Bar-B-Q

924 N. Bright Leaf Blvd., Smithfield  
919-934-8721  
10414 US Hwy 70 W., Clayton  
919-553-4553  
5180 NC Hwy 42 W., Garner  
919-773-0774  
[scnbc.com](http://scnbc.com)

### Stephenson's Bar-B-Q

11964 NC Hwy 50 N., Willow Springs  
919-894-4530

### Stormin' Norman's Barbecue

404 S. Church St., Kenly  
919-284-0061  
[storminnormansbbq.com](http://storminnormansbbq.com)

### The Chicken Barn

703-B E. Market St., Smithfield  
919-934-6866  
[thechickenbarn.com](http://thechickenbarn.com)

### The Diner

314 E. Market St., Smithfield  
919-934-6644

### The Redneck BBQ Lab

12101-B NC Hwy 210, Benson  
919-938-8334  
[redneckbbqlab.com](http://redneckbbqlab.com)

### White Swan Bar-B-Q

105 N. Honeycutt St., Benson  
919-894-4446  
11960 NC Hwy 210, Benson  
919-989-9299  
3198 US Hwy 301 S., Smithfield  
919-934-8913  
3655 Wilson's Mills Rd., Wilson's Mills  
919-989-6500  
[whiteswanbarbeque.com](http://whiteswanbarbeque.com)



## Coffee Shops

### Boulevard Coffee House

411 Athletic Club Blvd., Clayton  
919-243-0268  
[boulevardcoffeeounge.com](http://boulevardcoffeeounge.com)

### Grapes & Grounds

135 S. Third St., Smithfield  
919-934-3688

### Milltown Java

116 S. Center St., Princeton  
919-617-8006  
[milltownjava.com](http://milltownjava.com)

### Starbucks Coffee Co.

13024 US Hwy 70 W. #103, Clayton  
919-359-0690

110 S. Equity Dr., Smithfield  
919-621-4996  
[starbucks.com](http://starbucks.com)

### Ugly Mug Bean & Brew

51-E Technology Dr., Garner  
919-916-5277  
[umcoffee.com](http://umcoffee.com)

## Delis | Bakeries

### Big Steve's Bagels and Deli

12330 NC Hwy 210, Benson  
919-989-8006

### Clayton Bakery & Café

8970 US Hwy 70 E., Clayton  
919-550-5300  
[claytonbakery.com](http://claytonbakery.com)

### Cornerstone Café & Coffee

206 E. Main St., Benson  
919-701-1600  
[cornerstonecafeandcoffee.com](http://cornerstonecafeandcoffee.com)

### Cyber Café

514 N. Bright Leaf Blvd., Smithfield  
919-938-7741  
[jcindustries.com/retail-operations/cyber-cafe](http://jcindustries.com/retail-operations/cyber-cafe)

### Gotham's Deli

224 E. Market St., Smithfield  
919-934-9100  
[gothamsdeli.com](http://gothamsdeli.com)



### Jenny's Sweet Creations

221 E. Main St., Benson  
919-207-0381

### JP's Pastry

111 S. Railroad St., Benson  
919-894-5000  
[jpspastry.com](http://jpspastry.com)

### Long Island Express Deli

10368 US Hwy 70 Bus., Clayton  
919-550-6800  
[longislandexpressdeli.com](http://longislandexpressdeli.com)

### Nancy Jo's Homemade

200 E. Main St. #103, Clayton  
919-333-7895  
[nancyjoshomemade.com](http://nancyjoshomemade.com)

### Saks Neighborhood Deli

876 Gully Dr., Clayton  
919-550-8100  
[saksdeli.com](http://saksdeli.com)

### Sherry's Signature Cheesecakes

120 E. Main St., Clayton  
919-270-0513  
[signaturecheesecakes.com](http://signaturecheesecakes.com)

## Other

### Chick-fil-A

1300 N. Bright Leaf Blvd., Smithfield  
919-938-0058  
[cfarestaurant.com/smithfield](http://cfarestaurant.com/smithfield)

### Chipotle Mexican Grill

120 S. Equity Dr., Smithfield  
919-934-1002  
[chipotle.com](http://chipotle.com)

### Kenly 95 Petro Foodcourt

923 Johnston Pkwy., Kenly  
Caribou Coffee  
Dairy Queen  
Iron Skillet  
Taco Bell/Pizza Hut Express  
Subway  
Wendy's  
919-284-5121  
[kenly95.com](http://kenly95.com)

## Table Service

### Anthony's Italian Pizza & Pasta

12989 US 70 Bus. Hwy., Clayton  
919-550-3204  
[anthonyspizzaclaytonnc.com](http://anthonyspizzaclaytonnc.com)

### Applebee's

1260 N. Bright Leaf Blvd., Smithfield  
919-989-8885  
5158 NC Hwy 42 W., Garner  
919-662-7281  
[applebees.com](http://applebees.com)

### Becky's Log Cabin

2491 US Hwy 70 Bus. E., Smithfield  
919-934-3323  
[beckys-logcabin.com](http://beckys-logcabin.com)

### Buffalo Wild Wings

130 S. Equity Dr. Smithfield  
919-938-1250  
[buffalowildwings.com](http://buffalowildwings.com)

### Clayton Steakhouse

307 E. Main St., Clayton  
919-553-2299  
[claytonsteakhouse.com](http://claytonsteakhouse.com)

### Cleveland Draft House

6101 NC Hwy 42 W., Garner  
919-771-2337  
461 Shotwell Rd., Clayton  
919-550-3723  
[clevelanddrafthouse.com](http://clevelanddrafthouse.com)

### Clubhouse at Cleveland Square

51-A Technology Dr., Garner  
919-662-2207  
[clubhouse4042.com](http://clubhouse4042.com)

### Don Beto's Tacos

10376 US 70 Bus Hwy W., Clayton  
919-359-0095  
720 Ricks Rd., Selma  
919-202-4566  
[donbetostacos.com](http://donbetostacos.com)

### El Barzon Mexican

1691 S. Bright Leaf Blvd., Smithfield  
919-205-1661

### El Charro Mexican

709 S. Wall St., Benson  
919-207-2806

### Festejos-Mexican

905 E. Main St., Clayton  
919-350-8855  
[festejosmexicanfood.com](http://festejosmexicanfood.com)

### Fiesta Mexicana

957 Town Center Blvd., Clayton  
919-550-8888  
5131 NC Hwy 42 W., Ste. 270, Garner  
919-772-5498  
[fiestamexicananc.com](http://fiestamexicananc.com)

### The FlipSide

408 E. Second St., Clayton  
919-553-0123  
[theflipsideclaytonnc.com](http://theflipsideclaytonnc.com)

### Heidi's Two-Wheel Café

1475 W. Market St., Smithfield  
919-989-8389

### Kobe Japanese Steakhouse

101 Venture Dr., Smithfield  
919-938-3200  
820 Gully Dr., Clayton  
919-359-9060  
[kobenc.com](http://kobenc.com)





**La Cocina Mexican**

11617 US Hwy 70 W., Clayton  
 919-550-7323  
 1285 N. Bright Leaf Blvd., Smithfield  
 919-938-7002  
[laccocinanc.com](http://laccocinanc.com)

**La Piazza**

7727 NC Hwy 42 W., Raleigh  
 919-662-5007

**Lane's Seafood & Steak House**

275 Bowling Spring Dr., Angier  
 919-894-7700  
[gregoryvineyards.com](http://gregoryvineyards.com)

**Lone Star Steakhouse**

13049 US Hwy 70 W., Clayton  
 919-205-9158  
[lonestarsteakhouse.com](http://lonestarsteakhouse.com)

**Manning's**

406 E Main St., Clayton  
 919-585-7005  
[manningsonmain.com](http://manningsonmain.com)

**McKinley's Restaurant and Pub**

11751 US Hwy 70 W., Clayton  
 919-553-5534  
[mckpubctown.com](http://mckpubctown.com)

**Mucho Mexico**

712 E. Market St., Smithfield  
 919-989-6889

**Outback Steakhouse**

911 Outlet Center Dr., Smithfield  
 919-989-3056  
[outback.com](http://outback.com)

**Ruby Tuesday**

65 Son Lan Pkwy., Garner  
 919-772-3838  
 160 Smithfield Crossing Dr., Smithfield  
 919-938-3640  
[rubytuesday.com](http://rubytuesday.com)

**San Marcos Mexican**

275 N. Equity Dr., Smithfield  
 919-934-2424  
[sanmarcosrestaurant.com](http://sanmarcosrestaurant.com)

**Simple Twist**

5638 NC Hwy 42 W., Garner  
 919-661-5566  
 227 E. Market St., Smithfield  
 919-938-0377  
 272 Pritchard Rd., Clayton  
 919-550-4909  
[simpletwistnc.com](http://simpletwistnc.com)

**Skylines Café**

8878 US Hwy 70 Bus. W., Clayton  
 919-550-7619  
[skylinescafe.com](http://skylinescafe.com)

**SoDoSoPa**

146 S. Third St., Smithfield  
 919-205-1076  
[sodosopa.biz](http://sodosopa.biz)

**Sushi Bonsai Pad Thai Pho**

11629 US Hwy 70, Clayton  
 919-550-6030

**Texas Steakhouse & Saloon**

235 Outlet Center Dr., Smithfield  
 919-938-3221  
[texassteakhouse.com](http://texassteakhouse.com)

**Twisted Owl Sports Bar & Grill**

150 S. Equity Dr., Smithfield  
 919-205-1483

**Venero's Pizzeria**

9973 US Hwy 70 W., Clayton  
 919-553-0761  
[venerospizzeria.com](http://venerospizzeria.com)





***Your wedding or special event in Johnston County  
can be rustic, elegant, outside, or all three at once!***

Getting married in rural destinations on farms, wineries, and horse venues is very popular with today's brides. Johnston County has all these and more for your wedding, social event, or family reunion, including Bed & Breakfast Inns, historic homes and several area farms.

The Visitors Bureau staff offers a wide variety of complimentary services to help you find the venue that suits your special event, just call 1-800-441-7829 for assistance!

- Suggestions for ceremony and reception sites.
- Provides room block assistance with overnight accommodations.
- Provides visitor information for your out-of-town guests.
- Free gift bags for event attendees.



*Benson*

**Benson Civic Center**  
1204 N. Johnson St., Benson  
919-894-5117

[townofbenson.com/2172/facilities-locations](http://townofbenson.com/2172/facilities-locations)

**Benson Conference Center**  
303 E. Church St., Benson  
919-894-3553

[townofbenson.com/2172/facilities-locations](http://townofbenson.com/2172/facilities-locations)

**Benson Singing Grove**  
406 E. Main St., Benson  
919-894-5117

[townofbenson.com/2172/facilities-locations](http://townofbenson.com/2172/facilities-locations)

**Enoch Vineyards**  
3735 NC Hwy. 50 S., Benson  
919-427-5740

**Gregory Vineyards.**  
275 Bowling Springs Dr., Angier  
919-894-7700

[gregoryvineyards.com](http://gregoryvineyards.com)

**Preston Woodall House  
Bed & Breakfast**  
201 E. Hill St., Benson  
919-894-7025  
[woodallhouse.com](http://woodallhouse.com)

**The Barn at Broadslab**  
4676 NC Hwy 50 S., Benson  
919-207-1366

[broadslabdistillery.com](http://broadslabdistillery.com)

**W. J. Barefoot Auditorium**  
303 E. Church St., Benson  
919-894-3553  
[townofbenson.com/2172/facilities-locations](http://townofbenson.com/2172/facilities-locations)

## Clayton

### Brick & Mortar Events

217 E. Main St., Clayton  
919-616-8995

[brickandmortarevents.com](http://brickandmortarevents.com)

### Gateway Event Center

501 Yates Dr., Clayton  
919-333-1988

[gatewayconferenceandeventcenter.com](http://gatewayconferenceandeventcenter.com)

### Monti Hall

9963 US Hwy 70 W., Clayton  
919-553-0761

[venerospizzeria.com/monti-hall-catering](http://venerospizzeria.com/monti-hall-catering)

### Portofino

25 Paraggi Ct., Clayton  
919-270-0089

[portofinoc.com/the-amenities/schedule-an-event/](http://portofinoc.com/the-amenities/schedule-an-event/)

### The Clayton Center

111 E. Second St., Clayton  
919-553-3152

[theclaytoncenter.com](http://theclaytoncenter.com)

### The Wagner House

121 E. Main St., Clayton  
919-550-0065

[wagnerhouseclayton.com](http://wagnerhouseclayton.com)

### The Woman's Club of Clayton

109 Church St., Clayton  
919-413-2533

[twccnc.org](http://twccnc.org)

## Four Oaks

### Howell Woods Environmental Learning Center

6601 Devil's Racetrack Rd., Four Oaks  
919-938-0115

[johnstoncc.edu/howellwoods](http://johnstoncc.edu/howellwoods)

## Garner

### The Hall and Gardens at Landmark

12450 Cleveland Rd., Garner  
919-329-7674

[thehallatlandmark.com](http://thehallatlandmark.com)

## Pine Level

### Hinnant Vineyards

826 Pine Level-Micro Rd., Pine Level  
919-965-3350

[hinnantvineyards.com](http://hinnantvineyards.com)

## Princeton

### Gurley House and Titia's Garden

207 W. 3rd St. Princeton  
919-936-4141

[gurleyhouse.com](http://gurleyhouse.com)

## Selma

### Camp Mary Atkinson

8591 NC 42 E., Selma

919-782-3021

[nccoastalpines.org/en/camp/rent-our-facilities.html](http://nccoastalpines.org/en/camp/rent-our-facilities.html)

### The Barn @ Camp Nellie

4899 Anitoch Church Rd., Middlesex  
919-202-1991

[thebarn-campnellie.com](http://thebarn-campnellie.com)

### The Farm at 95

215 Batten Rd., Selma  
919-750-5464

[thefarmnc.com](http://thefarmnc.com)



## Smithfield

### Atkinson-Smith House

8514 Brogden Rd., Smithfield  
919-934-5115

[southerncharmwedding.com](http://southerncharmwedding.com)

### Country Club of Johnston County

694 Country Club Rd., Smithfield  
919-934-4166

[ccjohnstoncounty.com](http://ccjohnstoncounty.com)

### Double Barley Brewing

3174 Hwy. 70 W., Smithfield  
919-934-3433

[doublebarleybrewing.com](http://doublebarleybrewing.com)

### Johnston County Agricultural Center

2736 NC Hwy 210, Smithfield  
919-989-5380

[johnston.ces.ncsu.edu/site-johnston-ag-center-auditorium](http://johnston.ces.ncsu.edu/site-johnston-ag-center-auditorium)

### Paul A. Johnston Auditorium

245 College Rd., Smithfield  
919-209-2112

[johnstoncc.edu/performingarts/facilities-rental](http://johnstoncc.edu/performingarts/facilities-rental)

### Smithfield Recreation and Aquatics Center

600 Booker Dairy Rd., Smithfield

919-934-1408  
[sraonline.com](http://sraonline.com)

### The Pond at Lazy O Farm

403 Old Olive Rd., Smithfield  
919-934-1132  
[thepondatlazyofarm.com](http://thepondatlazyofarm.com)



# Annual Events

*When planning your visit to the county you might want to consider timing it with one of the many annual events and festivals held throughout the year.*

## February

### **Black History Month - Gospel Fest**

In celebration of Black History Month, this entertaining annual event offers performances by community groups including choirs, dance troupes, mimes and solo performers. Free.

Paul A. Johnston Auditorium and Lobby, 245 College Dr., Smithfield  
919-209-2539 [jccperformingarts.com](http://jccperformingarts.com)

## March

### **Bentonville Battlefield's Anniversary Event**

The Anniversary of the Battle of Bentonville features artillery and infantry demonstrations. Call for program details. Free.

Bentonville Battlefield State Historic Site, Four Oaks  
910-594-0789 [nchistoricsites.org/bentonvi/](http://nchistoricsites.org/bentonvi/)

### **Johnston County Art and Food Festival**

Attendees will be treated to delicious sample dishes from some of Johnston County's finest restaurants along with a juried art exhibit.

Johnston Community College, 245 College Rd., Smithfield  
919-938-0306 [jcartscouncil.org](http://jcartscouncil.org)

## April

### **Beach Fest at The Farm**

Come enjoy this show featuring some of the best beach music bands in the business.

215 Batten Rd., Selma  
919-750-5464 [thefarmnc.com](http://thefarmnc.com)

### **Classic Antique Power Heritage Festival**

Large display of antique tractors, equipment and engines, tractor games, parades and field demonstrations.

355 J Lee Rd., Benson  
919-894-3825 [benson-chamber.com](http://benson-chamber.com)

## NC Beer Month

This annual month-long celebration of NC Craft Beer production offers visitors a host of tastings, tap takeovers, beer dinners and more.

### **Deep River Brewing**

919-585-2296 [deeperiverbrewing.com](http://deeperiverbrewing.com)

### **Double Barley Brewing**

919-934-3433 [doublebarleybrewing.com](http://doublebarleybrewing.com)

## NC Wine & Beer Festival

Sip local NC craft beverages, sample amazing chef inspired menus and shop local vendors.

The Farm at 95, 215 Batten Rd., Selma

919-882-3733 [ncwineandbeerfestival.com](http://ncwineandbeerfestival.com)

## Strawberry Festival

All day celebration for the community focused on family fun and entertainment including classic car show, face painting and activities for kids, lots of food and of course, strawberries!

Technology Dr., Hwy 40 & 42  
919-773-8448

[greaterclevelandchamber.com](http://greaterclevelandchamber.com)

## May

### **East Coast Truckers Jamboree**

Three day truck and car show with live music and games.

923 Johnston Pkwy, Kenly  
919-502-707 [kenly95.com](http://kenly95.com)

### **Flower Hill Rhodo Ramble**

A traditional early May nature walk at this Johnston County jewel for the magnificent blooms of Catawba rhododendron and other wildflowers.

NC Hwy 231 N. & Flower Hill Rd., Middlesex  
919-833-3662 x102 [triangleland.org](http://triangleland.org)





### Smithfield Ham & Yam Festival

The Annual Ham & Yam Festival is teaming with ham biscuits, barbecue pork, and sweet potatoes. There will be arts, crafts, kid's activities, live entertainment, pig cooking contest, "What's That Yam Thing?", and piglet races.

Throughout Downtown Smithfield  
919-934-0887 [hamandyam.com](http://hamandyam.com)



### Smith's Farm Mother's Day Festival

Enjoy strawberry picking, fresh produce, flowering plants, fishing, and farm animals.

Smith's Nursery 443 Sanders Rd., Benson  
919-934-1700 [smithsnurseryinc.com](http://smithsnurseryinc.com)

## June

### Summer Living History Series

Discover how Civil War soldiers lived in camp and what role the enlisted man played in battle. Call for program details.

Bentonville Battlefield State Historic Site, Four Oaks  
910-594-0789 [nchistoricsites.org](http://nchistoricsites.org)

### 301 Endless Yard Sale

Johnston County and its towns along US 301 announce the "Endless Yard Sale" to take place the third weekend of June. The communities will join together with deals, antiques, collectibles and more along a 100-mile stretch of highway between Roanoke Rapids and Dunn, NC.

US Hwy 301 Kenly to Benson 919-989-8687  
[301endlessyardsale.com](http://301endlessyardsale.com)

### Mondo Roots Cultural Arts & Music Festival

Festival-goers will enjoy a day filled with entertainment featuring national touring musical acts, fine arts vendors and handmade crafts.

Downtown Clayton  
585-729-6663 [mondoroots.com](http://mondoroots.com)

### State Annual Singing Convention

The oldest Southern gospel convention in the nation includes three days of gospel music competition including amateur duets, trios, quartets, choirs, and family groups.

Benson Singing Grove, Benson  
919-894-4389 [gospelsingingconvention.org](http://gospelsingingconvention.org)

## September

### Benson Mule Days

A Southern tradition for over 60 years, this four day family-fun festival is packed with mule competition events, rodeos, carnival rides, arts and crafts, street dances and concerts.

Downtown Benson and Chamber Park  
919-894-3825 [bensonmuledays.com](http://bensonmuledays.com)

### Camp Flintlock Colonial Faire

Learn to write with quill and ink, throw a tomahawk, listen to period music, view black powder firearms demonstrations, sample early American cuisine, shop in a Colonial store, and much more!

1580 King Mill Road, Four Oaks  
919-938-1776 [campflintlock.com](http://campflintlock.com)

### Clayton Harvest and Music Festival

Come and enjoy five days of exciting events! Concerts, Clayton Idol Competition, Karaoke Contest, Dance Party and more. Food for all taste buds, 200 craft vendors and Classic Car Show.

Downtown Clayton  
919-553-6352 [claytonchamber.com](http://claytonchamber.com)

### Farm Fest

Annual country music concert featuring today's top acts presented by Springhill Outfitters.

215 Batten Rd., Selma  
919-750-5464 [thefarmnc.com](http://thefarmnc.com)

### Four Oaks Acorn Festival

The festival begins with a parade and continues with a variety of food, arts and crafts, jewelry and clothing, information vendors, and a host of children's activities.

Baker St., Four Oaks  
919-963-4004 [fouroakschamber.com](http://fouroakschamber.com)

### St. Ann's Annual International Food Festival

Come be a part of this wonderful festival with foods representing nineteen countries from around the world, music and games for children.

St. Ann Catholic Church, 4057 US 70 Hwy Business W, Clayton  
919 934-2084 [st-annschurch.org](http://st-annschurch.org)

### GALOT's PDRA

Join the racing excitement at this year's Professional Drag Racing Association event at GALOT Motorsports Park.

555 Dragstrip Rd., Benson  
919-894-1662 [galotmotorsportspark.com](http://galotmotorsportspark.com)

## October

### Bentonville's Fall Festival and Living History

Enjoy period games, wagon rides and more! Costumed interpreters will demonstrate domestic skills from the 19th Century.

Bentonville Battlefield State Historic Site, Four Oaks  
910-594-0789 [nchistoricsites.org/bentonvi](http://nchistoricsites.org/bentonvi)

### GALOT's Monster Truck Throwdown

Join thousands of Monster Truck fans for this exciting event at the new GALOT Motorsports Park just south of Benson.

555 Dragstrip Rd., Benson  
919-894-1662 [galotmotorsportspark.com](http://galotmotorsportspark.com)

### Smith's Farm Annual Fall Festival

Enjoy hayrides, pumpkins, millet maze, fishing, farm animals with produce and plants available. Admission.

Smith's Nursery 443 Sanders Rd., Benson  
919-934-1700 [smithsnurseryinc.com](http://smithsnurseryinc.com)

### Archer Lodge Country Auction

The annual event begins with BBQ plates and homemade desserts, followed by a country auction of crafts and food products.

Archer Lodge Community Building  
919-550-1738 [archerlodge.org](http://archerlodge.org)



### Clayton Piano Festival

Enjoy a host of fun, family-oriented outreach shows, innovative classes for local music students and accessible, festive concert performances by world renowned guest artists.

121 E. Main St., Clayton

919-606-9703 [claytonpianofestival.org](http://claytonpianofestival.org)

### Historical Ghost Walk

Small groups will be guided through the cemetery where costumed re-enactors will tell stories about famous (and perhaps infamous) persons buried there.

Riverside Cemetery, corner of South Second and Church Streets, Smithfield  
919-934-2836

### Johnston County Heritage Quilt Show

The event will feature quilts made for service projects by the Jo Co Quilters and quilts on show.

2736 NC 210 Hwy, Smithfield  
919-989-5380

### N.C Grape Stomp Festival

You're invited to "squish, sip and stomp" at this family-friendly festival celebrating the grape tastings, games, barbecue sauce contest and even a Lucille Ball look-alike contest.

275 Bowling Springs Dr., Angier

919-894-7700 [gregoryvineyards.com](http://gregoryvineyards.com)

### Railroad Days Festival

Come join us in Uptown Selma as we celebrate our rail heritage with our Annual Railroad Days Festival with a 5K run, parade, crafts, food, children's area, and a variety of entertainment.

Uptown Selma

919-975-1411 [selma-nc.com/railroad-days-festival](http://selma-nc.com/railroad-days-festival)

### The Shindig

Enjoy some of the best craft brewers around with a stellar line up of music featuring some of the best Americana and Bluegrass music from national acts to local favorites.

110 W. Main St., Clayton

919-816-6969 or 919-438-8555

[theshindig.net](http://theshindig.net)

### Wilson's Mills Pumpkin Festival

Come out the 2nd weekend in October for a family friendly event with vendors, children's activities and costume contest, dunking booth, music, food, antique farm equipment display, 5k run/walk.

Downtown, Wilson's Mills.

919-938-3885 [wilsonsmillsnc.org](http://wilsonsmillsnc.org)



## November

### American Music Jubilee Christmas Show

Take a nostalgic trip back to an innocent age when anticipation of Santa's visit made the holidays magical. Enjoy gospel favorites and the contemporary beat of hits like "Christmas in Dixie". Matinees and evening shows.

Rudy Theatre, 300 Raiford St., Selma

919-202-9927 [amjubilee.com](http://amjubilee.com)

### Downtown Smithfield Wine Walk

Walkers visit businesses in the downtown district to sample wines at many locations.

119 N. Third St., Smithfield

949-934-0887 [downtownsmithfield.com](http://downtownsmithfield.com)

### Meadow Lights

The largest and oldest Christmas light display in eastern NC. Also features the largest candy store with over 300 varieties of candy.

4546 Godwin Lake Rd., Benson

919-669-5969 [meadowlights.com](http://meadowlights.com)

### Princeton Veterans Day Celebration

Join the celebration and support those in service to our country past and present with a parade, contests, entertainment, guest speakers and more!

Center & Edwards Sts., Princeton

919-965-5661 [myprincetonnc.com](http://myprincetonnc.com)

## December

### Bentonville's "A Civil War Christmas" Holiday Open House

Come celebrate a Civil War Christmas with costumed interpreters will decorate the kitchen in festive themes using natural materials such as holly, magnolia, cotton stalks, fruit, cranberry & popcorn strands.

Bentonville Battlefield State Historic Site, Four Oaks.

910-594-0789 [nchistoricsites.org/bentonvi/](http://nchistoricsites.org/bentonvi/)

### American Music Jubilee Christmas Show

Take a nostalgic trip back to an innocent age when anticipation of Santa's visit made the holidays magical. Enjoy gospel favorites and the contemporary beat of hits like "Christmas in Dixie". Matinees and evening shows.

Rudy Theatre, 300 Raiford St., Selma

919-202-9927 [amjubilee.com](http://amjubilee.com)



Held several times a year, on Saturdays from 10am-3pm the Museum features a traditional trade, craft or art on-site. Vendors demonstrate traditional skills and often have items for sale. All activities are included with regular admission to the Museum.

### Tobacco Farm Life Museum

709 N. Church St., Kenly 919-284-3431

[tobaccofarmlifemuseum.org](http://tobaccofarmlifemuseum.org)



### Lights on the Neuse

Come for family Christmas fun to view Christmas lights by hayride. Visit with Santa and see the 3D Christmas Barn. Stand by the fire to warm up and roast marshmallows to make s'mores.

Boyette Family Farms, 1620 Loop Rd., Clayton  
919-553-0016 [lightsontheneuse.com](http://lightsontheneuse.com)

### New Year's Eve at The Farm

Ring in the new year at The Farm with wonderful music and dancing. Featuring new bands each year.

215 Batten Rd., Selma  
919-750-5464 [thefarmnc.com](http://thefarmnc.com)

### Meadow Lights

The largest and oldest Christmas light display in eastern NC. Also features the largest candy store with over 300 varieties of candy.

4546 Godwin Lake Rd., Benson  
919-669-5969 [meadowlights.com](http://meadowlights.com)



For cultural arts events at several venues around the county, check our events calendar for dates and times

[johnstoncountync.org/events](http://johnstoncountync.org/events)

We hope you visit us often!

Smithfield | Selma | Clayton | I-40, Exit 312 | Benson | Four Oaks | Kenly

# Visitors Guide

Ava's  
HOME  
TOWN

SMITHFIELD  
NORTH CAROLINA



Johnston  
County

SMITHFIELD, NC

1-800-441-stay

[johnstoncountync.org](http://johnstoncountync.org)

#VisitJoCo



## VIP SHOPPER CLUB

Become a VIP Shopper Club member and receive:

- A Savings Passport for exclusive discount offers
- Online VIP Lounge membership with access to special features
- Exclusive online offers
- Information and invitations to local events
- Insider info from your favorite brands
- Email updates

VISIT [PREMIUMOUTLETS.COM/VIP](http://PREMIUMOUTLETS.COM/VIP) TO JOIN TODAY.

  
CAROLINA  
PREMIUM OUTLETS®  
A SIMON CENTER

JCO18-2-18 50m