

GOLDSBORO

BE MORE DO MORE SEYMOUR

North Carolina

www.visitgoldsborongc.com



Welcome to Goldsboro and Wayne County...

Where we are as proud of our pickles, as we are our planes! We're pretty partial to pork as well!

Home of Seymour Johnson Air Force Base, Mt. Olive Pickle Company, and famous for the best barbeque in eastern North Carolina, we are a destination rich with culture and heritage, captivating visitors and residents, alike.

Relax while paddling the Neuse River or spend an action packed day playing a round of disc golf, hiking, mountain biking, or riding ATV's at one of our many outdoor recreational facilities. Explore our parks and attend one of our festivals or concerts.

Or, pause in awe watching F-15E Strike Eagle jets soar across the sky.

Goldsboro Wayne County has built its future by celebrating its past. Come and experience our unique legacy!



Be More. Do More. Seymour.



ACTIVATE

With Wayne County's many recreational opportunities, action is the game plan, whether you enjoy sports, hiking, paddling, or an excursion to one of our beautiful parks. Catch some air, tee off, explore a trail, or glide down our gentle rivers. Whatever your activity, we'll keep you energized!



AMF BOULEVARD LANES

If you need some fun, come bowling with us! It just feels good to knock stuff down. Bowling is the ideal way to entertain your family, friends, and co-workers. It's a sport, a recreation, or a night out. Everyone can do it!

105 S. Berkeley Boulevard, Goldsboro, NC 27534 | (919) 735-6358

www.amf.com

BUSCO BEACH ATV PARK AND CAMPGROUND

An "ATV Rider's Paradise" with more than 1,800 acres of riding trails, drag races, motorcross tracks, youth tracks, mudpits, mudholes, mudraces, and ATV ponds. For those who prefer water, we've got a lake and several ponds – perfect for swimming, jetskiing, boating, or fishing. Busco Beach has plenty of water front space for primitive camping and full RV hook-up. Open year round! So come enjoy sunny beaches and off road fun. For more information, visit our website.

1243 Bryan Boulevard, Goldsboro, NC 27530 | (919) 222-9614

www.buscobeachandatvpark.com

CLIFFS OF THE NEUSE STATE PARK

The 90-foot high cliffs on the Neuse River's south bank show the magnificently chiseled results of "Mother Nature's" mighty force.

Cliffs of the Neuse State Park encompasses over 1,000 acres. The new visitors center is open daily from 8am-5pm and features delightful and educational exhibits as well as meeting space for up to 100. Reservations required for meeting space.

The "Cliffs" also offer:

- Seasonal swimming in the 11 acre lake
- Canoe, kayak, and paddle boat rentals
- Motorcoach parking
- RV sites with electrical/sewer hook ups
- Senior citizen discount for camping
- Outdoor grills
- Pets allowed (6-foot leash required)
- Picnic area & restrooms
- Vending machines/concessions (seasonal)
- Designated site on the NC Birding Trail at www.ncbirdingtrail.org



All camping reservations may be made by calling 1-877-7-CAMP-NC.

240 Park Entrance Road, Seven Springs, NC 28578 | (919) 778-6234

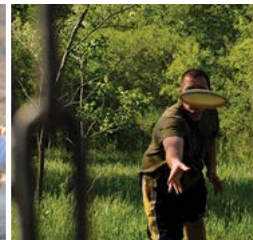
www.ncparks.gov

GOLDSBORO EQUESTRIAN CENTER

Situated on 22 acres, the facility consists of a large stall barn, pastures, jumping arena, and covered and lighted riding rings. Visitors are welcome.

- Training & boarding
- Certified instructors with 50 years plus combined experience
- Riding Academy – Western and English
- Therapeutic riding
- Show team
- Equestrian 4H Program

281 Leslie Drive, Goldsboro, NC 27530 | (267) 377-7518





Recreation

GOLDSBORO FAMILY YMCA

- Enclosed Olympic size pool with spectator seats
- Indoor walking and running track
- Weight room
- Triple gymnasium
- Group exercise classes
- Summer camp
- After school program
- Preschool program
- Swim lessons (year round)
- Showers/locker rooms
- Sauna, steam room, and jacuzzi
- Outdoor sports complex featuring 6 multipurpose fields and 1.5 mile track
- Sporting events may be booked with reservations

1105 Parkway Drive, Goldsboro, NC 27534 | (919) 778-8557

www.goldsboroymca.org

GOLDSBORO PARKS AND RECREATION

- Eleven city parks that offer picnic shelters, restrooms, equipment rentals, events, and activities for all age groups
- Tennis courts
- Basketball courts
- Ball fields
- Goldsboro Mountain Bike Trail featuring 3 miles of winding, single track trails for beginner to advanced riders
- Three disc golf courses, Stoney Creek Park, Berkeley Park, and Goldsboro Municipal Golf Course
- Farmer's Market
- Goldsboro Municipal Golf Course
- Wayne County Veterans Memorial
- Year round events

(919) 739-7480

www.goldsboroparksandrec.com

THE SEYBORO CYCLISTS

This group has been riding the roads of Wayne, Lenoir, and Greene Counties for 30 years. Whether you have a desire to race, ride for fitness, fun, or recreation, there is a place for you in the group. Their goal is to promote and encourage bicycling in our community and they are involved in a wide range of cycling activities. Come out, meet other cyclists, and join some really great rides.

For more information, call (919) 738-9509.

www.seyborocyclists.org

WAYNE COUNTY PADDLE TRAILS

The Wayne County Paddle Trails consist of over 70 miles of interconnected rivers, streams, and tributaries that twist and wind through Wayne County. The main artery of water, the Neuse River, is estimated to be two million years old and has an abundance of wildlife in and along its banks. Paddle by the Cliffs of the Neuse where the river cuts a 90-ft. gorge through limestone and sandstone bluffs. Wayne County Paddle Trails is part of the Statewide System of Paddle Trails being promoted by NC Paddle Trails Association.



For more information on paddling events and updates, call (919) 734-7922 or visit

www.visitgoldsboronc.com.



GOLDSBORO MUNICIPAL GOLF COURSE

The Goldsboro Municipal Golf Course, owned and operated by the City of Goldsboro Recreation and Parks, is a par 72 layout that golfers of all levels find enjoyable and challenging. Redesigned in 1999 by architect John LaFoy, the course offers champion Bermuda greens, 419 Bermuda fairways, plenty of deep and challenging bunkers, and unrivaled combination of long and short par 4 holes and a large driving range. This course features new Champion Bermuda Greens; US Kids Golf forward tees for families; and the area's best practice range with target greens, fairway bunkers, and a pitch to putting green. GMGC is also an accredited "AFGL" FootGolf Course.

"Not your everyday muny."

407 Eden Place, Goldsboro, NC 27530 | (919) 735-0411

www.gmgcgolf.com

LANE TREE GOLF CLUB AND CONFERENCE CENTER

Set on a pastoral 289 acres, this 18-hole championship course offers "Championship Bermuda" greens and Bermuda fairways, as well as a double-decker driving range. Designed by architect John LaFoy, Lane Tree Golf Club and Conference Center was recently awarded a 3.5 Star Rating by Golf Digest for best course to play. They offer golf club/equipment rentals, club repair, private golf lessons, and a full service restaurant.

Lane Tree Golf Club and Conference Center offers event space for up to 400 and borders the new I-795 corridor. Only a 50 minute drive from Raleigh or just moments from I-95 and I-40.

2317 Salem Church Road, Goldsboro, NC 27530 | (919) 734-1245

www.lanetree.com

SOUTHERN WAYNE COUNTRY CLUB

A par 71, 6,265-yard layout makes for a challenging yet fair round of golf. Tree-lined Bermuda grass fairways and small Bermuda greens give this course its uniqueness. Southern Wayne is a non-metal spike facility.

262 Country Club Road, Mount Olive, NC 28365 | (919) 658-4269

www.southernwaynecountryclub.com

WALNUT CREEK COUNTRY CLUB

The Carolina Golf Panel has listed WALNUT CREEK as the NUMBER ONE HIDDEN GEM of Eastern North Carolina! The Ellis Maples course design recently received a facelift. Newly shaped greens and surrounding greens areas create a marvelous flow of contour and design. The new greens' surfaces are a mix of L-93 and Crenshaw Bent grass varieties.

The yardage from the tips measure 7,053 yards, but you can play from the distance you feel most suits your game as we offer 5 sets of tees to choose from. The course slope ranges from 132 from the back tees to 117 from the front tees. The practice facility boasts a driving range, practice chipping green, and putting green.

508 Lakeshore Drive, Goldsboro, NC 27534 | (919) 778-3034

www.walnutcreekcountryclub.org





STIMULATE

Art and Culture is the portal for artistic knowledge and discovery. In Wayne County, all of the arts come together to learn, connect and share.



ARTS COUNCIL OF WAYNE COUNTY

The Arts Council of Wayne County offers exhibitions; performances; workshops; art classes; and houses adult and children's art galleries, studios, and much more. Visit the Art Market! From pottery to photography, jewelry to textiles, paintings to prints, the Art Market is a wonderful place to find unique, one-of-a-kind works of art.

102 N. John Street, Goldsboro, NC 27534 | (919) 736-3300

www.artsinwayne.org

CENTER STAGE THEATRE

Established in 1978, Center Stage Theatre is a 501(c)(3) non-profit community theatre group providing quality entertainment to Wayne County, NC and beyond. For a complete listing of performances, visit our website.

PO Box 1255, Goldsboro, NC 27533 | (919) 429-9278

www.csttheatre.org

STAGESTRUCK: THE YOUNG PEOPLE'S OWN THEATRE

Established in 1978, Center Stage Theatre (CST) is Goldsboro's longest running community theatre group. CST produces 4-5 plays and musicals a year in venues such as the Paramount Theatre and the Wayne County Museum and performs an annual production of *A Christmas Carol* which has become a Downtown Goldsboro tradition. Auditions are always free and open to the public for all productions. Season and individual tickets are available. Visit the CST website for full details.

121 W. Chestnut Street, Goldsboro, NC 27530 | (919) 736-4530

www.stagestruck.org

THE PARAMOUNT THEATRE

Originally built in 1882 and reconstructed in 2008, this beautiful landmark is Historic Downtown Goldsboro's headquarters for the performing arts. In addition to an increasing amount of events produced by local organizations, the Paramount Theatre now presents an annual Performing Arts Series featuring nationally and internationally known artists. Visit the website for a complete listing of performances.

139 S. Center Street, Goldsboro, NC 27530 | (919) 583-8432

www.goldsboroparamount.com



Downtown Goldsboro

EXPLORE

Experience Goldsboro's historic downtown, as well as the abundant appeal of the area. Our landmarks are reminders of the hard work and success of the past. Many consider our town a living museum where history is preserved amidst a variety of things to do and see, and our rural charm makes Wayne County one of the most beautiful areas of the state to visit.



ELMWOOD CEMETERY

In 1874, the City of Goldsboro purchased 2 1/3 acres of land from E.E. Faircloth, W.R. Parker, and J.E. Peterson for \$200. The land was the former burial plot of local plantation owner General James Rhodes and was to be used as an African American cemetery. Adjacent to Waynesborough Historical Village, Elmwood Cemetery is home to the grave of Marine PFC. Dan Bullock. Bullock is believed to be the youngest serviceman killed in action during the Vietnam War.

306 East Elm Street, Goldsboro, NC 27530

DILLARD ALUMNI CENTER/H.V. BROWN HALL

In 1869, the Quakers offered to provide a free school for African American Children, if the parents could furnish a building. The school opened in 1882 under the name, Goldsboro Grade School. Reverend Clarence Dillard

came to Goldsboro in 1884 to serve as Pastor of the Presbyterian (Shiloh) Church. In 1894, Reverend Dillard became principal of the school. The building that Reverend Dillard saw erected was named Dillard High School. The Reverend Clarence Dillard retired in 1924 and was succeeded by Mr. Hugh Victor Brown. In 1956, the school celebrated 30 years of accreditation and two years later, a national alumni association organization was chartered. The group, "Dillard/Goldsboro Alumni and Friends, Incorporated," attracts thousands of visitors each Memorial Day Weekend and has a full service community facility at the H.V. Brown Hall. The Hall accommodates functions of 500 and is available as a venue for banquets, receptions, and other gatherings.

PO Box 1051, 801 Poplar Street, Goldsboro, NC 27533

www.dgafinc.org

HERMAN PARK

Goldsboro's oldest and most popular park is in the center of town on Park Avenue. The park was donated to the City in 1890 by Solomon and Henry Weil in memory of their brother, Herman. Herman Park's facilities include 10 lighted tennis courts, three picnic shelters, the historic park house and fountain, a gazebo, a goldfish pond, a children's playground, and a miniature train. Visitors can enjoy a train ride on weekends from 1:00 – 5:00 p.m., April through September. Herman Park is open year-round until 11:00 p.m.

Corner of Herman and Beech Streets | (919) 739-7480

www.goldsboroparksandrec.com

GOLDSBORO UNION STATION

Goldsboro's historic Union Station was built in 1909 to serve the Atlantic Coast Line Railroad, the Southern Railway, and the Atlantic and North Carolina Railway. Passenger trains utilized it up to 1968. It was placed on the National Register of Historic Places in 1977, identifying its importance in architectural history. Currently there are plans ongoing to restore the structure. Phase I design is already underway. After restoration, the building will be available for shops, offices, and community functions such as meetings and special events.

101 North Carolina Street, Goldsboro, NC 27530 | (919) 735-4959

www.dgdc.org

WAYNE COUNTY COURTHOUSE

Built in 1914, this landmark hosts a World War I memorial and a marker denoting the execution of North Carolina's first surveyor, John Lawson, by local Indians of the Tuscarora Tribe. The courthouse's restoration and addition project won the *Preservation North Carolina Gertrude S. Carroway Award for Merit*.

224 E. Walnut Street, Goldsboro, NC 27530 | (919) 722-6100

www.waynegov.com



Downtown Goldsboro



WAYNE COUNTY CHAMBER

The Wayne County Chamber of Commerce has a legacy, over a century old, of accomplishing great things for Wayne County. The Wayne County Chamber is home to the Military Affairs Committee, Wayne Education Network, Governmental Affairs Committee, Young Professionals and Leadership Wayne. The Chamber is committed to the concept that there is enormous strength in unity and great benefit to be gained by the exchange of information and ideas.

Download 'MyChamberApp' for FREE today and gain instant access to nearly 600 Chamber Members with information on local businesses... phone numbers...and locations!

308 N. William Street, Goldsboro NC 27530 | (919) 734-2241

www.waynecountychamber.com



WAYNE COUNTY MUSEUM

Used in World War II as a USO, the museum, located in the heart of Historic Downtown Goldsboro, memorializes Wayne County history with rotating exhibits, a permanent War Between the States exhibit, and a Wall of Fame honoring notable Wayne County natives. The museum continually collects, preserves, studies, and exhibits objects illustrating the history of man and nature in Wayne County. Tours for groups and students by appointment.

116 N. William Street, Goldsboro, NC 27530 | (919) 734-5023

www.waynemuseum.org

WAYNE COUNTY VETERANS MEMORIAL

This living monument was erected to honor those veterans who have died and instill in future generations an understanding and respect for the sacrifices made on our behalf by so many. The site includes a Memorial Wall, The Pavilion, Jaycees' Vietnam Memorial, SJAFB sculpture, Wayne County granite map, fountain, and illuminated flags.

239 E. Walnut Street, Goldsboro, NC 27530 | (919) 739-7480

www.wayneveteransmemorial.org

WAYNESBOROUGH HISTORICAL VILLAGE

Our park is located on the site of the former town of Waynesborough, the original seat of Wayne County from 1787 until 1847. The park consists of a village featuring nine historic buildings brought from across the county.



These buildings, including a school, lawyer's office, and Quaker meeting house, date from the 1860's. Designated on the NC Birding Trail, Waynesborough Village offers 150 acres along the Neuse and Little Rivers with over four miles of walking trails through open spaces, forest, and cypress swamp. Our facilities are available for weddings, reunions, camping, and other special events.

- Visitor Center
- Guided tours with advance registration
- Self-guided tours
- Motor coach parking
- Picnic area & restrooms
- Gazebo
- Primitive camping
- Pets allowed outside only with leash
- Service animals permitted in buildings

801 S. US 117, Goldsboro, NC 27530 | (919) 731-1653

www.oldwaynesborough.org

WILLOWDALE CEMETERY

Designed in 1853 by Colonel Charles Nelson, this historically significant cemetery features an 1883 Confederate Monument underneath, which lies the mass grave of 800 Confederate soldiers. Among the historic graves, are the gravesites of Texas soldier Jarad K. White, former North Carolina Governor Curtis Brogden, and first Secretary of the Army General Kenneth Claiborne Royall. The Willow Dale's Jewish section hosts women's rights activist and founder of the NC League of Women Voters, Gertrude Weil.

306 E. Elm Street, Goldsboro, NC 27530 | (919) 750-2203



Around Wayne County

CHERRY HOSPITAL MUSEUM

Originally opened in 1880 by the state for African Americans with mental illnesses, Cherry Hospital was renamed in 1959 for Governor R. Gregg Cherry. Patients worked its 3,500 acres of farmland until the 1970's. The museum depicts over a century of history with photographs, log books, and a variety of the hospital's authentic medical and farming equipment.

201 Stevens Mill Road, Goldsboro, NC 27530 | (919) 731-3417

www.cherryhospital.org/museum.htm

DAVID JOHN AARON HISTORICAL MUSEUM

137 E. Main Street, Mount Olive, NC 28365

www.mtolivemuseum.com

THE GOLDSBOROUGH BRIDGE BATTLEGROUND

The battlefield is the site of the battle of Goldsborough Bridge, where on December 17, 1862, some 2,000 Confederate forces attempted to stop Union Gen. John Foster's 12,000 troops from destroying a vital railroad bridge. The bridge, located south of the city over the Neuse River, was a key position for both Union and Confederate forces. An informational kiosk provides visitors with a battlefield map and further information. Walking trails surround the cultivated field which Confederate troops crossed during their bloody counterattack against the Union rear guard. These trails take visitors to nine additional historical markers where specific events of the battle are detailed. Two sets of well-preserved earthworks may be viewed, as well as the site of the Wilmington & Weldon Railroad Bridge, the objective of the Union army.

303 Old Mount Olive Hwy, Goldsboro, NC 27530 | (866) 440-2245

www.goldsboroughbridge.com

GOVERNOR CHARLES B. AYCOCK BIRTHPLACE STATE HISTORIC SITE

Living history demonstrations thrive on audience participation at the 1870's boyhood home of North Carolina's "Educational Governor." The site includes a visitors' center, a mid-nineteenth century homestead, and an 1893 one-room schoolhouse.

- Guided tours & living history demonstrations
- Working farm
- Farm animals
- Picnic area & restrooms
- Pets allowed outside only with leash; service animals permitted in building
- Visitors Center
- Gift shop/souvenirs available
- Motorcoach parking

264 Governor Aycock Road, Fremont, NC 27830 | (919) 242-5581

www.nchistoricsites.org/aycock/aycock.htm

MOUNT OLIVE HISTORIC DISTRICT

Mount Olive was formed as a village before the Civil War and was occupied by Union soldiers in Foster's Raid on December 16, 1862. Incorporated in 1870, the town is home to the world famous Mount Olive Pickle Company and the North Carolina Pickle Festival. Mount Olive has been listed on the National Register of Historic Places since 1999.

SEVEN SPRINGS UNITED METHODIST CHURCH

The "Church on the Hill," was built in 1874 and overlooks the village of Seven Springs. The hill saw Civil War occupation by Union soldiers during the Battle of Whitehall, in which Union and Confederate soldiers fought from opposite sides of the Neuse River.

Hwy 55, Seven Springs, NC 28578

WAYNE EXECUTIVE JETPORT

The Wayne Executive Jetport provides an opportunity for other industries to visit the area and offers a convenient place for (industrial) executives to land. The airport has a 5,500 foot runway and all air activity is coordinated with Seymour Johnson Air Force Base.

240 Aviation Road, Pikeville, NC 27863

www.waynegov.com

YEAGER FIELD/MOUNT OLIVE AIRPORT

227 Mount Olive Airport Road, Mount Olive, NC 28365 | (919) 635-1471

www.bassaviation.com





EMBRACE

Listen to the lessons of the past and learn why Wayne County is steeped with historical significance. Our rich history is laden with stories of Tuscarora Indians, steam boats, Revolutionary skirmishes, and Civil War battles. The world's longest railroad once ran through our county, and we are proud to be home to Seymour Johnson Air Force Base, home of the 4th Fighter Wing and the 916th Refueling Wing.



CIVIL WAR HISTORY



Goldsboro was an important railroad junction during the Civil War. Confederate troops were stationed here to guard the city and report for duty by rail. Hospitals were established and over 800 Confederate soldiers were buried in a mass grave at Willowdale Cemetery. Breastworks were built to protect the city. Remains are still visible along Claiborne Street.

For more information on Civil War Trails, visit www.civilwartrails.org.

THE BATTLE OF GOLDSBOROUGH BRIDGE: FOSTER'S RAID

In December 1862, Union General John Foster marched from New Bern with an army of 12,000 men. The intent was to interrupt the Confederate supply chain by destroying the railroad bridge which crossed the Neuse River, three miles south of Goldsborough. On December 17, Union troops attacked and pushed back a small force of 2,000 Confederates, then burned the bridge and destroyed miles of railroad tracks. That afternoon Confederate forces attacked the rear of Foster's army as it was leaving the field. The Confederates suffered over 150 casualties and Union losses were under 100. Re-enactments of the battle are held on the site every two years.

For more information, visit www.goldsboroughbridge.com.

THE UNION OCCUPATION OF GOLDSBOROUGH

In 1865, Goldsborough was Union General Sherman's destination on his march through the Carolinas. Three Union armies converged on Goldsborough and captured the city in March. Union hospitals were established, and the city was occupied for three weeks by over 100,000 Union soldiers.

SEYMOUR JOHNSON AIR FORCE BASE (SJAFOB)

Home of the 4th Fighter Wing, which flies the F-15E Strike Eagle jet, and the 916th Air Refueling Wing, which flies the KC-135R Stratotanker, the Base has an intricate history within and around Goldsboro and Wayne County. First activated in 1942, the installation was named in honor of U.S. Navy Lt. Seymour A. Johnson, a Goldsboro native, who was killed in March 1941. By 1944, the primary mission of the base was to train P-47 Thunderbolt pilots.

Following World War II, the base was inactivated. In 1954, Goldsboro Mayor, Scott B. Berkely Sr., and a group of business leaders successfully lobbied to have the base reopened. A ground-breaking ceremony was conducted in 1955, Seymour Johnson was reactivated in April 1956 and officially reopened on July 8. Two years later, the storied 4th Fighter Group, then known as the 4th Fighter Day Wing, arrived.

Continued



Historical

In 2001, former Department of Defense Secretary Donald H. Rumsfeld named SJAFB the winner of the *2001 Commander-In-Chief's Award for Installation Excellence*. The award recognizes outstanding and innovative efforts of the people who operate and maintain U.S. military installations. As one of five recipients of this award, SJAFB was selected for its exemplary support of the Department of Defense mission and received \$1.1 million in base improvements.

Base tours for the public are offered monthly through the Goldsboro Wayne County Travel & Tourism office. For more information, call (919) 734-7922.

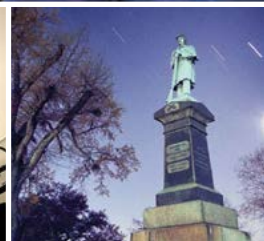
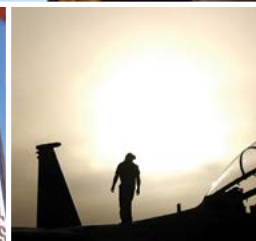
NATIONAL REGISTER OF HISTORIC PLACES

- Charles B. Aycock Birthplace State Historic Site (Fremont vicinity) 02/26/70
- Barnes-Hooks Farms (Fremont vicinity) 09/01/95
- Eureka United Methodist Church (Eureka) 08/26/82
- First Presbyterian Church (Christian Science Church, Goldsboro) 05/29/79
- L.D. Giddens and Son Jewelry Store (Goldsboro) 03/19/79
- Goldsboro Union Station (Goldsboro) 04/13/77
- Harry Fitzhugh Lee House (Goldsboro) 03/01/84
- Former Mount Olive High School (Mount Olive) 10/22/98
- Mount Olive Historic District (Mount Olive) 05/27/99
- Odd Fellows Lodge (Goldsboro) 08/03/78
- Perry-Cherry House (Mount Olive) 03/13/80
- Southerland-Burnette House (Mount Olive) 02/08/88
- Former United States Post Office (Mount Olive) 06/02/95
- Soloman and Henry Weil Houses (Goldsboro) 12/22/76

HISTORIC MARKERS

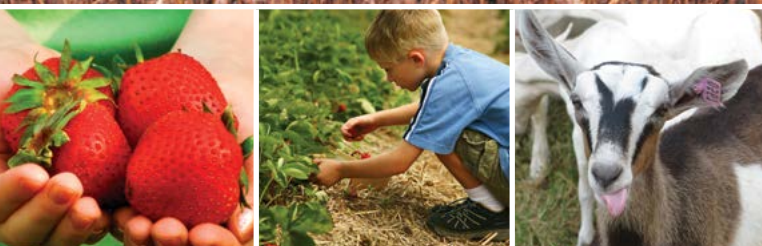
- **Charles B. Aycock:** Governor, 1901-1905. Birthplace stands 2/3 miles east. US 117 south of Fremont.
- **Waynesborough:** First seat of Wayne County. Incorporated 1787. Site is here. US 117 bypass in Goldsboro.
- **Sherman's March:** Sherman's army, on its march from Savannah, entered Goldsboro on March 21, 1865. NC 581 (West Ash Street) in Goldsboro.
- **North Carolina Railroad:** Built by the state, 1851-56. Eastern terminus a few miles north. NC 581 (West Ash Street) in Goldsboro.
- **Curtis H. Brogden:** Governor, 1874-77; home is two miles northwest on US 13 south of Goldsboro.
- **Foster's Raid:** Union troops led by General J.G. Foster attacked Goldsboro, December 17, 1862. NC 581 (West Ash Street) in Goldsboro.
- **Wm. T. Dortch:** Confederate Senator. US 70 Business (Ash Street) and William Street in Goldsboro.
- **Dobbs County Court House:** Formed in 1758 and named for Governor Arthur Dobbs. 3 miles south. US 70 at SR 1719 (Best Station Road) east of Walnut Creek.

- **Seymour Johnson Air Force Base:** Field used, 1942-46, for flight training by Army Air Forces; reopened in 1956. Berkeley Boulevard at Elm Street in Goldsboro.
- **Torhunta:** Large Indian farming community. Destroyed in 1712. US 13 at SR 1572 (Saulston Road) 3 miles northeast of Goldsboro.
- **University of Mount Olive:** Original Free Will Baptist. US 117 Bypass in Mount Olive.
- **Battle of Whitehall:** On December 15-16, 1862 Union troops led by Gen. J.G. Foster damaged the Confederate Ram "Neuse." NC 55 at Main Street in Seven Springs.
- **North Carolina Press Association:** Organized May 14, 1873. J.A. Engelhard elected first president at meeting held near this spot. Walnut Street in Goldsboro.
- **Kenneth C. Royall:** Last Secretary of War and First Secretary of the Army, 1947-49. Home was here. NC 581 (West Ash Street) in Goldsboro.
- **Odd Fellows Home:** Orphanage and school opened in 1892. The original 20-acre tract is now a city park. US 70 Business (East Ash Street) at Herman Street in Goldsboro.
- **Cherry Hospital:** Opened by the state in 1880 for black citizens with mental illness. US Hwy 581 at SR 201 (Stevens Mill Road) just west of Goldsboro.
- **General Baptist State Convention:** Statewide association of black Baptists organized October 18, 1867 at First African Baptist Church, then located .2 mile west. US Hwy 177 Business (George Street) at Pine Street in Goldsboro.
- **Gertrude Weil:** 1879-1971; advocate for extending voting rights to women, 1920; home was here. 200 West Chestnut Street, Goldsboro.



CULTIVATE

Discover acres of open space, punctuated by long shimmering rows of summer crops, grazing livestock, and Muscadine laden vineyards. Come share the fun and celebrate the good earth.



A SECRET GARDEN WINERY

Located just five miles north of Goldsboro, this winery is situated on a family farm. A selection of naturally fermented wines are produced from the area's native grape and the official fruit of North Carolina, the Muscadine.

1008 Airport Road, Pikeville, NC 27863 | (919) 734-0260
www.asecretgardenwinery.com | www.visitncwine.com

CHERRY RESEARCH FARM

The Cherry Research Farm is one of 18 research stations across the state in the Research Station Division of the North Carolina Department of Agriculture and Consumer Services. The diverse facility has livestock and organic and convention crop production. The Center for Environmental Farming Systems (CEFS), established in 1994, is located on the farm.

201 Stevens Mill Road, Goldsboro, NC 27530 | (919) 513-0954
www.cefs.ncsu.edu | cefs_info@ncsu.edu

COTTLE FARMS

Pick-your-own or purchase pre-picked strawberries from April to June.

2488 West NC Hwy 403, Faison, NC 28341 | (910) 267-4531
www.cottlefarms.com

ELROY FARMS

Enjoy a variety of seasonal crops, including strawberries, corn, tomatoes, beans, melons, pumpkins, and Christmas trees from April through December.

170 Woodpeck Road, Goldsboro, NC 27534 | (919) 778-2381

GOVERNOR CHARLES B. AYCOCK BIRTHPLACE STATE HISTORIC SITE

Experience a working farm built in the 1840's. Tour a corn barn and stables. Sheep, fowl, field crops, and a three-season kitchen garden bring the historic farm back to life.

264 Governor Aycock Road, Fremont, NC | (919) 242-5581
www.nchistoricsites.org/aycock/aycock.htm

HINNANT FAMILY VINEYARDS

A North Carolina tradition since 1972, Hinnant Vineyards & Winery is the largest Muscadine vineyard in North Carolina consisting of 62 acres. The vineyards have produced award winning wines across the U.S.

- Products available for sale
- Gift shop
- Offers tours and wine tastings
- Weddings, receptions, and meeting space

826 Pine Level-Micro Road, Pine Level, NC 27568
 (919) 965-3350

www.hinnantvineyards.com | www.visitncwine.com

HOLLY GROVE FARMS, INC.

Situated on 65 acres, Holly Grove Farms is a family owned and operated business, specializing in all natural farmstead goat cheeses.

- Product made fresh daily
- Gift shop
- Group tours with advance notice
- Online orders available

1183 Grantham School Road, Mount Olive, NC 28365
(919) 689-2031 Fax (919) 689-2041

www.hollygrovecheese.com

JACK D. SMITH

Choose from seasonal crops, including strawberries, cabbage, potatoes, sweet corn, and pumpkins from May through October.

686 Riverbend Road, Goldsboro, NC 27534 | (919) 731-7269

MT. OLIVE PICKLE COMPANY

Enjoy a video tour and visit the Mt. Olive gift shop of this popular pickle producer Monday through Friday.

Corner of Cucumber and Vine, Mount Olive, NC 28365 | (919) 658-2535

www.mtolivepickles.com

NAHUNTA PORK CENTER

The largest all pork retail displayer in the eastern United States, the Nahunta Pork Center offers a complete line of fresh pork, salted pork, country cured pork, and a variety of fully cooked items.

200 Bertie Pierce Road, Pikeville, NC 27863 | (919) 242-4735

www.nahuntapork.com

T.C. SMITH PRODUCE FARM

Select from seasonal crops, including strawberries, cabbage, onion, potatoes, corn, beans, cucumbers, tomatoes, peas, cranberry beans, and collards from April through October.

464 Smith-Grady Road, Seven Springs, NC 28578 | (252) 569-7011



PARTICIPATE

Goldsboro Wayne County is full of activities for the entire family, with each season offering exciting family-friendly events. From outdoor festivals and concerts to historic re-enactments, children and adults alike, will find plenty of reasons to join in the fun!



MARCH

Daffodil Festival
Fremont, NC 27830

(919) 242-6011
www.fremontdaffodilfestival.com

MARCH/APRIL

**Seymour Johnson Air Force Base
Antique Car Show**
Seymour Johnson Air Force Base, NC 27531

(919) 722-0027
www.seymourjohnson.af.mil

APRIL

Pig in the Park Barbecue Festival
Historic Waynesborough Village

(919) 734-7922
www.piginthepark.com

North Carolina Pickle Festival
Mount Olive, NC 28365

(919) 658-3113
www.ncpicklefest.org

Greater Goldsboro Run
Historic Downtown Goldsboro

www.runtheeast.com

MAY

Antique Farm Equipment Days
Wayne County Fairgrounds

(919) 735-5503
www.waynefair.com

Center Street Jam
Every other Thursday from May-August
Downtown Goldsboro

(919) 735-4959
www.dgdc.org

Ole Timey Days Festival
Seven Springs

[www.facebook.com/pages/
Ole-Timey-Days-Festival](http://www.facebook.com/pages/Ole-Timey-Days-Festival)

**Dillard-Goldsboro High Alumni
Memorial Weekend**
801 Poplar St., Goldsboro NC 27533

(919) 734-6697
www.dgafinc.org

Wings Over Wayne Airshow
Seymour Johnson Air Force Base, NC 27531

(919) 722-0027
www.wingsoverwaynearshow.com

JUNE

Cruise the Neuse
Goldsboro Parks and Recreation

(919) 739-7480
www.goldsboroparksandrec.com

Sprinkler Fun Days
June through August
Cornerstone Commons/Downtown Goldsboro

(919) 735-4959
www.dgdc.org

JULY

Fourth of July Fireworks
Berkeley Mall

(919) 778-4616
www.shopberkeleymall.com

Fourth of July Fireworks & Concert
Mount Olive, NC 28365

(919) 658-3313
www.moachamber.com

AUGUST

National Honey Bee Celebration
Waynesborough Park

beekeepersotn@gmail.com

SEPTEMBER/OCTOBER

Beak Week (919) 739-7480
www.beakweek.org

Wayne Regional Agricultural Fair (919) 735-7277
www.waynefair.com

OCTOBER

Howl-O-Ween 5K (919) 739-7480
www.goldsboroparksandrec.com

Taste of Wayne (919) 735-3591
www.unitedwayne.com

Really Chili Challenge (919) 735-4959
www.dgdc.org

NOVEMBER

Lights Up Downtown (919) 735-4959
www.dgdc.com

NC Symphony Holiday Pops (919) 583-8432
www.goldsboroparamount.com

DECEMBER

A Christmas Carol (919) 583-8432
www.cstheatre.org

The Nutcracker Ballet (919) 583-8432
www.goldsboroparamount.com

Jingle in the Park (919) 739-7480
www.goldsboroparksandrec.com

Mount Olive Christmas Parade (919) 658-3113
www.moachamber.com

Child of the Promise (919) 583-8432
www.goldsboroparamount.com

Cliffs of the Neuse Flotilla (919) 778-6234
www.ncparks.gov

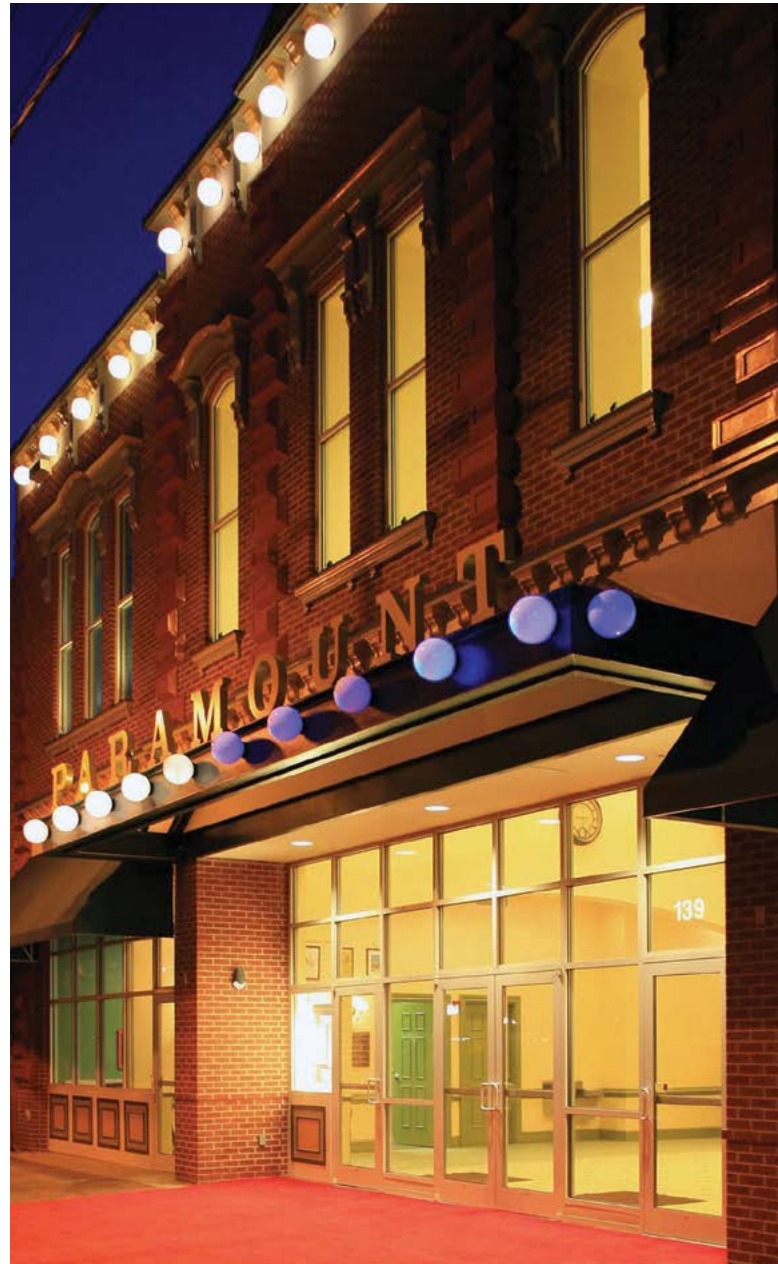
Young Professionals Group Goldsboro Christmas Parade (919) 734-2241
 Downtown Goldsboro

Battle of Goldsborough Bridge Re-enactment (919) 736-4423
www.goldsboroughbridge.com

Christmas Candlelight Tours (919) 242-5581
www.nchistoricsites.org/aycock/aycock.htm
 Gov. Charles B. Aycock
 Birthplace Historic Site

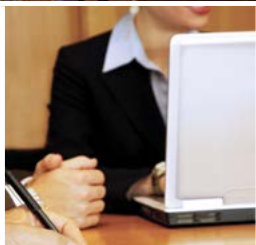
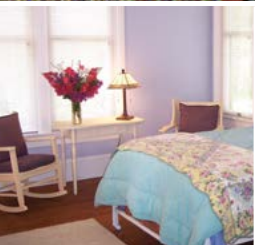
Trolley Rides (919) 735-4959
www.dgdc.org
 Every Tuesday Between Lights Up Downtown and
 Christmas Downtown Goldsboro

Mt. Olive Pickle Drop (919) 581-3628
www.mtolivepickles.com
 New Year's Eve
 Corner of Cucumber & Vine in Mount Olive, NC



INTERACT & UNWIND

Whether you're visiting us for business or pleasure, you'll enjoy authentic Wayne County hospitality: cozy, comfortable, historic... and modern or up to date!



Best Western Plus (919) 751-1999
Goldsboro, NC 27534 www.bestwestern.com

- Magnolia Room (Capacity: 60 banquet, 60 classroom, & 100 theater)
- Executive Boardroom (Capacity: 12)

Charles B. Aycock Birthplace Historic Site (919) 242-6668
Fremont, NC 27830 www.aycockbirthplace.nchistoricsites.org

- Auditorium (Capacity: 90)

Cliffs of the Neuse State Park (919) 778-6234
Seven Springs, NC 28578 www.ncparks.gov

- 1,000 sq. ft. air-conditioned auditorium (Capacity: 80)

Comfort Suites (919) 759-0098 / (800) 228-5150
Goldsboro, NC 27534 www.comfortsuites.com

- Meeting Room (Capacity: 50 banquet, 45 classroom, & 65 theater)

Country Inn & Suites (919) 581-0503 / (800) 456-4000
Goldsboro, NC 27534 www.countryinns.com

- Meeting Room (Capacity: 50 classroom, 74 theater)

Dillard/Goldsboro Alumni Cultural Center (919) 734-6697
Goldsboro, NC 27530

- H.V. Brown Hall (Capacity: 900 auditorium, 500 banquet)
- Cafeteria (Capacity: 200)

Downtown Goldsboro Development Corporation Office (919) 735-4959
Meeting Room (Capacity: 60) www.dgdc.org

The Goldsboro Event Center (919) 734-7480
Goldsboro, NC 27530 www.goldsboroparksandrec.com

- 3 Connected meeting rooms (Capacity: 250-275 banquet)
- 1 Conference room (Capacity: 20)

Goldsboro Family YMCA (919) 778-8557
Goldsboro, NC 27534 www.goldsboroymca.org

- 2 meeting rooms available for banquets or classrooms

Hampton Inn (919) 778-1800 / (800) HAMPTON
Goldsboro, NC 27534 www.hampton-inn.com

- Meeting Room (Capacity: 50)

Herman Park Center (919) 739-7480
Goldsboro, NC www.goldsboroparksandrec.com

- 2,744 sq. ft. auditorium (Capacity: 228 banquet, 305 theater)
- 2 meeting rooms each at 750 sq. ft.

Holiday Inn Express & Suites (919) 778-0007
Goldsboro, NC 27534 www.holidayinnexpress.com

- Meeting Room 1,200 sq. ft. (Capacity: 100 banquet, 50 classroom, & 130 theater)

Lane Tree Golf & Conference Center (919) 734-1245
Goldsboro, NC 27530 www.lanetree.com

- Club House (Capacity: 350)

Mount Olive Historic Assembly Hall (919) 658-2502
Mount Olive, NC 28365

- Meeting Room (Capacity: 40)
- Can be configured as classroom or conference room
- Equipped with audio-visual aids
- Assembly Hall (Capacity: 500)

Old Waynesborough Historical Village (919) 731-1653
Goldsboro, NC 27530 www.oldwaynesborough.org

- Conference Room (Capacity: 14)
- Hatch House (Capacity: 50)

The Paramount Theatre (919) 583-8432
Goldsboro, NC 27530 www.goldsboroparamount.com

- Theatre (Capacity: 500)
- Lobby (Capacity: varies by set-up)

Plum Tree Gardens Bed and Breakfast (919) 736-9412
Goldsboro, NC 27530 www.plumtreegardens.com

- 2 Meeting rooms (Capacity: 10-15 banquet, 75-100 reception)

Quality Inn (919) 778-9759 / (800) 228-5150
Goldsboro, NC 27534 www.qualityinn.com

- Conference Room (Capacity: 12)

Sleep Inn & Suites (919) 658-1002 / (800) 753-3746
Meeting Room 1,150 sq. ft. (Capacity: 75 -80) www.choicehotels.com

Southern Wayne Country Club (919) 658-4662
Mount Olive, NC 28365 www.southernwaynecountryclub.com

- Clubhouse available for meetings/banquets (Capacity: 200)

Walnut Creek Country Club (919) 778-3034
Goldsboro, NC 27534 www.walnutcreekcountryclub.org

- 40,000 sq. ft. of flexible meeting space (Capacity: 850-3,000)
- Panoramic views of lake and golf course

Wayne Center (919) 731-1520
Goldsboro, NC 27533

- Classroom/Theater (Capacity: 300)
- Banquet (Capacity: 250)

Wayne Community College (919) 735-5151 ext. 242
Goldsboro, NC 27534 www.waynecc.edu

- Richard B. Moffatt Auditorium (Capacity: 380)
- Dining Hall (Capacity: 380)
- Catering needs are provided

Wayne County Fairgrounds (919) 735-7277
2801 US Hwy 117 S. Dudley, NC 28333 www.waynefair.com

- Meeting Room (Capacity: 1,000)

The Wayne County Museum (919) 734-5023
Goldsboro, NC 27530

- Meeting Room (Capacity: 100, also features a small stage)

BED & BREAKFAST

Plum Tree Gardens Bed and Breakfast (919) 736-9412
109 S. George Street www.plumtreegardens.com
Goldsboro, NC 27530

CAMPING

Busco Beach (919) 222-9614
1243 Bryan Boulevard www.buscobeachandatvpark.com
Goldsboro, NC 27530

Cliffs of the Neuse (919) 778-6234
240 Parks Entrance Road www.ncparks.gov
Seven Springs, NC 28578

Old Waynesborough Historical Village (919) 731-1653
801 US Hwy 117 S. www.oldwaynesborough.org
Goldsboro, NC 27530

Wayne County Fairgrounds (919) 735-7277
2801 US Hwy 117 S. www.waynefair.com
Dudley, NC 28333

HOTELS/MOTELS

America's Best Value Inn (919) 734-4542
701 US Hwy 70 Bypass www.americasbestvalueinn.com
Goldsboro, NC 27534

Best Western Plus (919) 751-1999 / (800) 230-4134
909 N. Spence Avenue www.bestwestern.com
Goldsboro, NC 27534

Comfort Suites (919) 759-0098 / (800) 517-4000
2613 N. Park Drive www.comfortsuites.com
Goldsboro, NC 27534

Country Inn & Suites (919) 581-0503 / (800) 456-4000
2302 Norwood Avenue www.countryinns.com
Goldsboro, NC 27534

Days Inn - Goldsboro (919) 735-7911 / (800) 528-1234
801 Hwy 70 Bypass East www.daysinn.com
Goldsboro, NC 27534

Hampton Inn (919) 778-1800 / (800) HAMPTON
905 N. Spence Avenue www.hampton-inn.com
Goldsboro, NC 27534

Holiday Inn Express & Suites (919) 778-0007
1003 Sunburst Drive www.holidayinnexpress.com
Goldsboro, NC 27534

Lodge Inn (919) 736-0455
2306 Norwood Avenue
Goldsboro, NC 27534

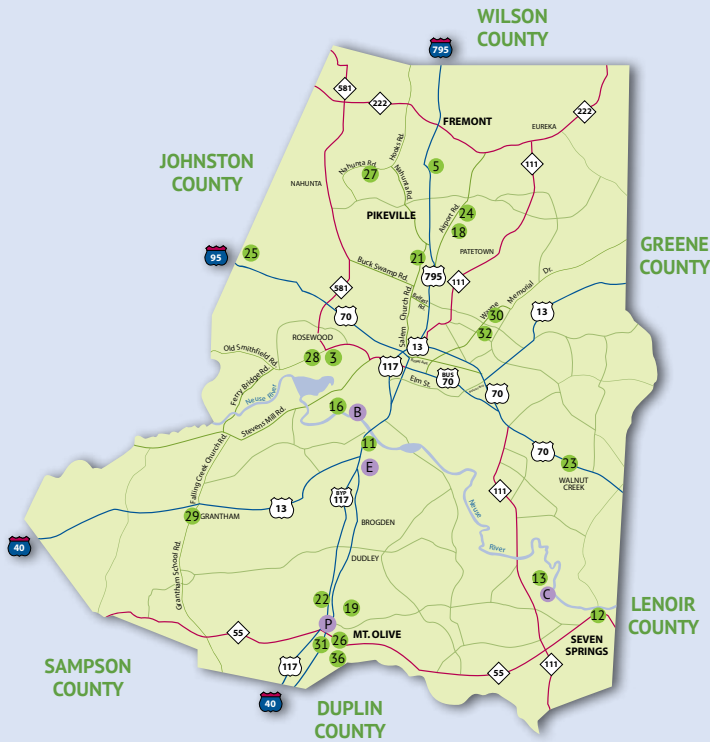
Marriott TownePlace Suites (919) 429-4530 / (888) 236-2427
2603 N. Park Drive www.marriott.com
Goldsboro, NC 27835

Quality Inn (919) 778-9759 / (800) 228-5150
1408 S. Harding Drive www.qualityinn.com
Goldsboro, NC 27534

Sleep Inn & Suites (919) 658-1002 / (800) 753-3746
203 NC 55 www.choicehotels.com
Mount Olive, NC 28365

GOLDSBORO WAYNE COUNTY

CITY, STATE & COUNTY MAPS



GOLDSBORO NORTH CAROLINA



ATTRACTIONS

Arts & Museums

- 1 The Arts Council of Wayne
- 2 Paramount Theatre
- 3 Cherry Hospital Museum
- 4 Wayne County Museum

Historical

- 5 Charles B. Aycock Birthplace
- 6 Waynesborough Historical Village & Visitors Center
- 7 Willowdale Cemetery
- 8 Elmwood Cemetery
- 9 Veteran's Memorial

Civil War Trail Sites

- 10 Foster's Raid
- 11 Battle of Goldsborough Bridge
- 12 Battle of Whitehall

Recreation

- 13 Cliffs of the Neuse/Seven Springs
- 14 Herman Park
- 15 Stoney Creek Park
- 16 Busco Beach

Military Installation

- 17 Seymour Johnson Air Force Base

Airport

- 18 Wayne Executive Jetport
- 19 Yeager Field/Mount Olive Airport

Golf Courses

- 20 Goldsboro Municipal Golf Course
- 21 Lane Tree Golf Course
- 22 Southern Wayne Country Club
- 23 Walnut Creek Country Club

Agri-Tourism

- 24 A Secret Garden Winery
- 25 Hinnant Family Vineyards
- 26 Mt. Olive Pickle Co.
- 27 Nahunta Pork Center
- 28 Cherry Research Farm
- 29 Holly Grove Farms

Colleges & Hospital

- 30 Wayne Community College
- 31 University of Mount Olive
- 32 Wayne Memorial Hospital
- 33 NC Wesleyan College

Information

- 34 Goldsboro Wayne County Travel & Tourism
- 35 Wayne County Chamber of Commerce & Visitors Center
- 36 Mount Olive Chamber

ACCOMMODATIONS

Bed & Breakfast

- A Plum Tree Gardens Bed & Breakfast

Camping

- B Busco Beach
- C Cliffs of the Neuse
- D Waynesborough Village
- E Wayne County Fairgrounds

Hotels/Motels

- F America's Best Value Inn
- G Best Western Plus
- H Comfort Suites
- I Country Inn & Suites
- J Days Inn-Goldsboro
- K Hampton Inn
- L Holiday Inn Express & Suites
- M Lodge Inn
- N Marriott TownePlace Suites
- O Quality Inn
- P Sleep Inn & Suites

Wayne County is situated on US 70, I-795, and Hwy US 117 halfway between Raleigh and the coast. Located approximately 15 minutes east of I-95 and I-40, Goldsboro Wayne County is the center of eastern North Carolina.



Waynesborough Historical Village & Visitors Center
801 US 117 S., Goldsboro, NC 27530
(919) 731-1653
www.oldwaynesborough.org

Wayne County Chamber of Commerce & Visitors Center
308 N. William Street, Goldsboro, NC 27530
(919) 734-2241
www.waynecountychamber.com

Goldsboro Wayne County Travel & Tourism
308 N. William Street, Goldsboro, NC 27530
(866) 440-2245 | (919) 734-7922
www.visitgoldboronc.com

