

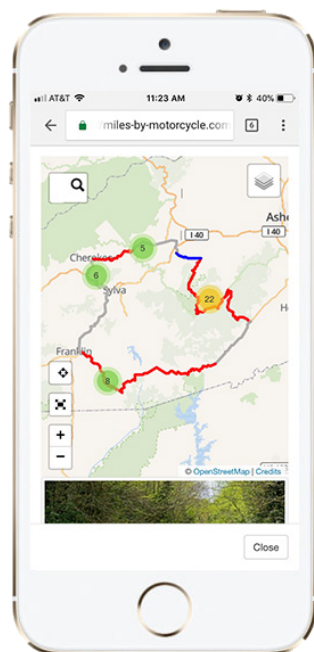


# RIDE THE NC SMOKIES

HAYWOOD COUNTY: Home to NC's Great Smoky Mountains and the Blue Ridge Parkway

Sitting at the heart of the greatest collection of motorcycle rides in the nation, Haywood County boasts many riding routes for all levels. Centrally located, it's the perfect place to stay and get the most out of your motor touring vacation. Rest your head in one of our cabins, hotels, lodges, or campgrounds and try a different route every day. Dare to tame "The Rattler" with 290 curves in 24 miles or cruise along our waterfall route and enjoy the endless scenic views. There is something for everyone, whether you are hiking, biking, kayaking, paddle boarding, or golfing. Visit our mountain towns of Maggie Valley, Waynesville, Lake Junaluska, Canton and Clyde where you'll find Main Streets full of eclectic restaurants and shopping, thriving arts communities, craft beer, (legal) moonshine, local Appalachian music and dancing, and the grandeur of the highest mountains in the East.

## MOBILE MAPS



**America Rides Maps** offers the most comprehensive and detailed motorcycle rides maps of the hundreds of great roads throughout the Blue Ridge Mountains from Virginia to Georgia. To view your route on a mobile device follow these simple steps:

1. Go to [mbymc.com](http://mbymc.com)
2. Enter the corresponding **map #** in the search bar at the top of the screen (a magnifying glass icon).
3. Click "**Search**" to view map

### Looking for more routes?

Stop by the Visit NC Smokies Visitor Center in Maggie Valley, NC to purchase America Rides Maps in pocket size and full size or head to [americaridesmaps.com](http://americaridesmaps.com) to purchase online.

Swing by our Visitor Center for great local information and a hard copy of this brochure!

## Visitor Center

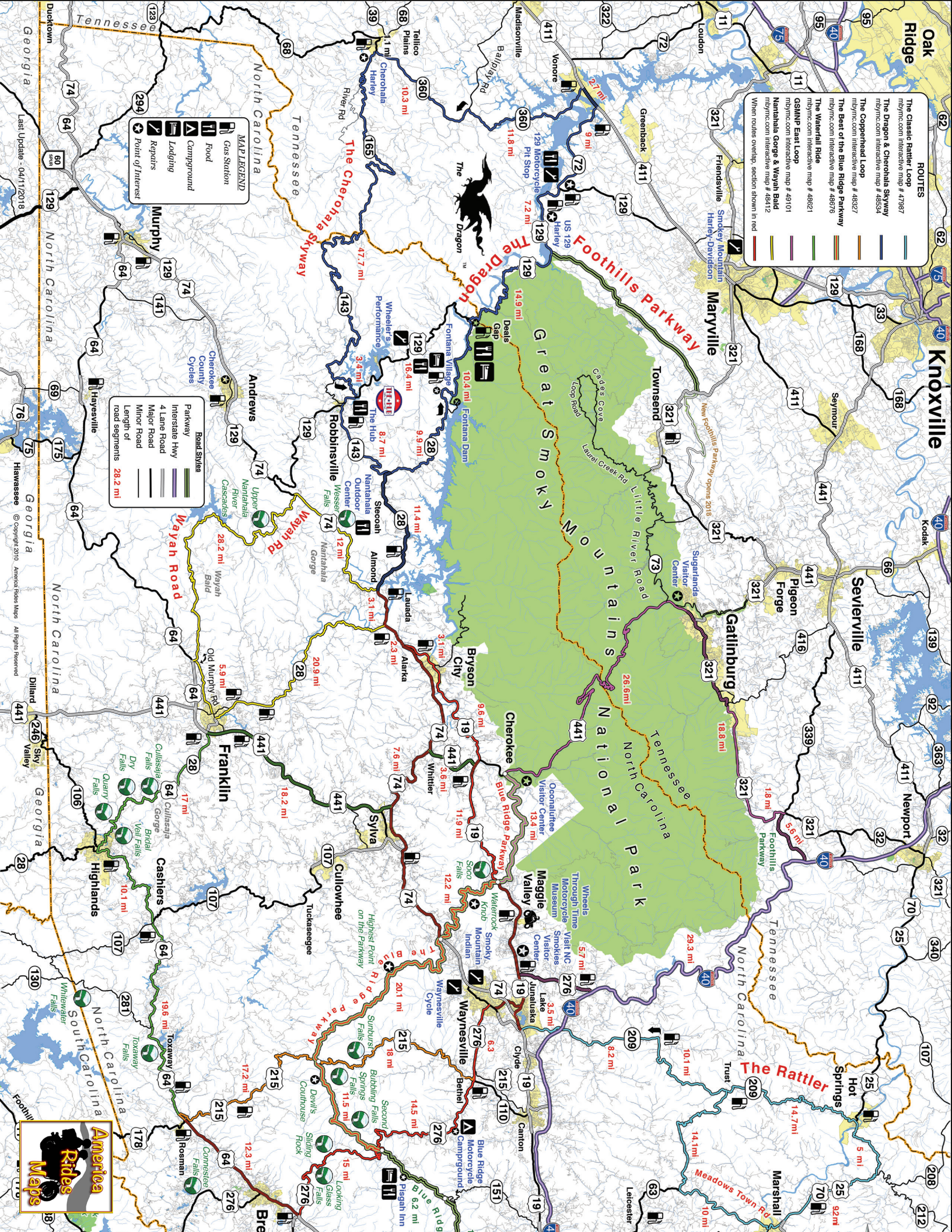
Open Monday - Saturday, 9am - 5pm  
Open Sundays Seasonally, 10am - 4pm  
1110 Soco Road, Maggie Valley, NC 28751  
(800) 334 - 9036

### Disclaimer

*This map is the property of Visit NC Smokies and may not be duplicated or reproduced without permission. As a condition of your voluntary participation in these routes, you hereby release and discharge Visit NC Smokies from any and all claims, demands, damages or liabilities arising from injury to your person or property as the result of driving on these routes. Please understand that operating a motorcycle/vehicle entails a certain amount of risk.*

  
**VISIT NC SMOKIES.COM**  
**@visitncsmokies #haynow**





**ROUTES**

- The Classic Rattler Loop # 47987  
mybnc.com interactive map # 48354
- The Dragon & Cherokee Skyway  
mybnc.com interactive map # 48354
- The Copperhead Loop  
mybnc.com interactive map # 48354
- The East of the Blue Ridge Parkway  
mybnc.com interactive map # 48354
- The Waterfall Ride  
mybnc.com interactive map # 48621
- GSMP East Loop  
mybnc.com interactive map # 49101
- Nantahala Gorge & Wayah Bald  
mybnc.com interactive map # 48412

When routes overlap, section shown in red

**MAP LEGEND**

- Gas Station
- Food
- Campground
- Lodging
- Repairs
- Point of Interest

**MAP LEGEND**

- Parkway
- Interstate Hwy
- 4 Lane Road
- Major Road
- Minor Road
- Length of road segments 28.2 mi



Last Update - 04/11/2018

Hiwassee © Copyright 2010, America Rides Maps. All Rights Reserved



# RIDE THE NC SMOKIES

## WATERFALL RIDE LOOP



### Approximately 190 miles - Easy All day ride

Tour a dozen road side waterfalls on this long and scenic drive. Break the Loop into 2 days if you'd like to make more stops along the Parkway and mountain towns. Map # 48671.

#### DIRECTIONS:

1. Start: Maggie Valley - US 19
2. Head West, pass under BRP
3. **Soco Falls** - on left
4. Left at traffic light by Casino onto Casino Trail
5. Left onto US 441 S
6. Exit 74 to continue on US 441
7. Exit 81 to continue on US 441
8. Exit at Franklin to NC 28 E
9. **Cullasaja Falls** - on right
10. **Quarry Falls** - on right
11. **Dry Falls** - on right
12. **Bridal Veil Falls** - on left
13. Left in downtown Highlands to continue on US 64
14. **Toxaway Falls** - on right
15. Continue on US 64 through downtown Brevard
16. Left at light for 276 N
17. **Looking Glass Falls** - on right
18. **Sliding Rock Falls** - on left
19. Right at entrance to BRP
20. Left on BRP
21. **Second Falls** - on right
22. Exit BRP at Beech Gap for NC 215 N / Lake Logan Rd
23. **Bubbling Springs Falls** - on right
24. **Sunburst Falls** - on left
25. Left on 276 towards Waynesville
26. Right on N Main St
27. Left on US 276 N / Russ Ave
28. Left on US 19 to Start

#### WATERFALLS: (nv) - not visible from road

**Soco Falls** - (nv) Gravel pull off on left. Follow path.  
**Cullasaja Falls** - Limited and hazardous parking near guardrail on curve.  
**Quarry Falls** - Paved pull-off on right side of road.  
**Dry Falls** - (nv) Paved parking on right. Short trail to waterfall.  
**Bridal Veil Falls** - Paved pull-off. Drive behind waterfall for photo.  
**Toxaway Falls** - Paved pull off on dam side.  
**Looking Glass Falls** - Paved parking on right. Boardwalk to falls.  
**Sliding Rock** - Parking lot leads to walkway for falls.  
**Second Falls** - (nv) Pull-off on right at Graveyard Fields overlook. Trail on right.  
**Bubbling Springs Falls** - (nv) Dirt pull off 1.8mi from BRP.  
**Sunburst Falls** - Gravel pull off by falls and paved parking.

## THE CLASSIC RATTLER LOOP



### Approximately 36 or 98 miles - Difficult 1 hr ride to Hot Springs 1/2 day loop (98 miles)

290 curves in 24 miles, this out & back loop ride is a longtime favorite among locals. NC 209 takes you on a challenging and scenic ride north to Hot Springs. Extend your ride and make a 100 mile loop! Map # 47987.

#### DIRECTIONS:

1. Start: Exit 104 on Hwy US 74
  2. Pass under US 74
  3. Continue on NC 209 N
  4. Right onto Betsy's Creek Rd
  5. Continue on NC 209\*
  6. NC 209 ends at Hot Springs
  7. Return as you came or continue on Loop ride
- \* Note Junction NC 63 - Popular spot for a break, loop returns here.

#### LOOP:

1. Pass through Hot Springs and cross French Broad River
2. Follow US 25 for 5 miles
3. Right at stop sign
4. Continue on US 25 / 70 towards Asheville
5. Veer right into Marshall
6. Right at traffic light cross French Broad River
7. Right at stop sign
8. Continue on NC 63
9. Left at stop sign to continue on NC 209 to return to Start

# RIDE THE NC SMOKIES

## THE DRAGON & CHEROHALA SKYWAY



**Approximately 67 or 250 miles - Moderate  
2 hr ride to Deals Gap (67 miles)  
All day loop (250 miles)**

Tail of the Dragon has 318 curves in 11 miles, and is America's #1 motorcycle and sports car road. Nearby Cherohala Skyway has 60 miles of breathtaking mountain highway. Map # 48534.

### DIRECTIONS:

1. Start: Maggie Valley - US 19
  2. Head West through Bryson City
  3. Merge onto US 74 W
  4. Right onto NC 28\*
  5. Continue on NC 28\*\*
  6. Right on US 129: The Dragon\*\*\*
- \* Note Junction NC 63 - Popular spot for a break, loop returns here.  
\*\* Cross bridge and turn right to visit Fontana Dam  
\*\*\* Motorcycle Resort here, food, gas, t-shirts, etc

### LOOP:

1. Ride The Dragon
2. Head North to Punkin Center
3. Left on TN 72 to Vonore
4. Left on US 411 S across lake
5. Left on TN 360 S
6. Left at stop sign to continue on TN 360 to Tellico Plains
7. Left on Cherohala Skyway\*
8. Left to continue on NC 143 E into Robbinsville\*\*
9. Right on US 129 S
10. Left on NC 143 E / Sweetwater Rd
11. Right at stop sign on NC 28 to return to Start

\* No gas for next 50+ miles  
\*\* End of Cherohala Skyway

## COPPERHEAD LOOP



**Approximately 89 miles - Moderate  
3 hr ride, more with stops**

US 276 and NC 215 are two of the finest motorcycle rides you'll find. The Copperhead Loop links them using US 64 through Brevard. You'll enjoy wonderfully twisty roads, waterfalls, and intersect the Blue Ridge Parkway at two points. Make a short loop or an all day adventure exploring several waterfalls! Map # 48327.

### DIRECTIONS:

1. Start: Waynesville - US 276 S
2. Right at traffic light in Bethel onto Love Joy Road
3. Left at stop sign onto Lake Logan Rd (NC 215)
4. **Sunburst Falls** - on right
5. **Bubbling Springs Falls** - on left
6. Pass under the BRP, continue S
7. Left on US 64 through Brevard
8. Left onto US 276N
9. **Looking Glass Falls** - on right
10. **Sliding Rock Falls** - on left
11. Pass under BRP, continue N
12. Pass through the stoplight in Bethel to return to start

### PISGAH TRIANGLE LOOPS:

1. Blue Ridge Parkway - 50 mi 2-3 hrs
2. US 64 - 90 mi 3-5 hrs
3. East Fork/Wilson Rd - 100 mi 5-7 hrs
4. SC 11 - 120 mi All day



# RIDE THE NC SMOKIES

## BEST OF THE BLUE RIDGE PARKWAY



### Approximately 50 miles - Easy Minimum 1/2 day

Arcing along the peaks on Haywood County's southern border, enjoy the highest and most scenic portion of the BRP. Enjoy views from the highest point, Devil's Courthouse, Looking Glass Rock, Graveyard Fields, and more. Map # 48678.

#### ENTRY POINTS FOR BLUE RIDGE PARKWAY:

1. **US 19** - Ride west from Maggie Valley. US 19 (Soco Rd) makes a steady climb to meet the Blue Ridge Parkway at Soco Gap (MP 455.7). 3.6 miles. Shortest route to get on the Blue Ridge Parkway.
2. **US 74** - Four lane highway meets the Blue Ridge Parkway 4.3 miles west of Waynesville.
3. **NC 215** - A long winding ride and one of the best in the area. Connects to I-40 at Exit 31. Passes through Canton (follow signs). Junction with US 276 in Bethel at traffic light. South of Bethel is the best section - a challenging and scenic climb.
4. **US 276** - Connects to I-40 at Exit 20. Four lane road crosses Jonathan Valley, then joins with US 19 at Maggie Valley. It passes through Waynesville as Main Street, then becomes an enjoyable country ride to the Bethel Valley. Junction with NC 215 in Bethel at traffic light. South of Bethel is the best section, a scenic climb that gets more challenging the higher you go.
5. **NC 151** - Makes a very steep descent from the Blue Ridge Parkway through a series of switchbacks, then winds across valley to meet US 19.

#### BLUE RIDGE PARKWAY HIGHLIGHTS:

The top overlooks on the Parkway in Haywood County

**Milepost 452.3 - Waterrock Knob:** Stop by the Blue Ridge Parkway Visitor Center and enjoy long range views from the parking lot.

**Milepost 446.7 - Woodfin Cascades:** Distant view of 235 foot waterfall. Can be difficult to see when leaves are on trees.

**Milepost 431.4 - Highest Point on the BRP:** Long range views and photo op with the iconic sign.

**Milepost 422.4 - Devils Courthouse:** Impressive rock formation with long range views.

**Milepost 417 - Looking Glass Rock:** Best view of the granite dome.

## HAYWOOD LOOP



### Approximately 45 miles - Difficult 1.5 - 2 hr ride

One of the many ways to loop ride some of the best roads that Haywood County offers and never be far from where you lay your head. Don't take it lightly, these roads are as challenging as you'll find. This is a great loop for the "iffy" days when you might want to stay close to home. *Not on Map.*

#### DIRECTIONS:

- |  |   |
|--|---|
| 1. Start: Maggie Valley - US 19 & US 276               | 12. Left on Broad St                                  |
| 2. Follow US 276 S                                     | 13. Right on Main St                                  |
| 3. Right on Rabbit Skin Rd                             | 14. Follow to US 19                                   |
| 4. Left at stop sign to cross bridge over Pigeon River | 15. Cross US 19 - Main St becomes Poison Cove Rd      |
| 5. Right on Riverside Rd                               | 16. Continue straight onto Stamey Cove Rd             |
| 6. Right on NC 209                                     | 17. Right on NC 215                                   |
| 7. Left on Upper Crabtree Rd                           | 18. Right on Sonoma Rd                                |
| 8. Right on Crabtree Mountain Road                     | 19. Follow US 276                                     |
| 9. Right on Thickety Rd                                | 20. Veer Right at stop sign and follow to Waynesville |
| 10. Left on Charles St                                 | 21. Right on Main St                                  |
| 11. Cross bridge over Pigeon River                     | 22. Left on Russ Ave / US 276                         |
|  | 23. Left onto US 19 to Start                          |



# RIDE THE NC SMOKIES

## GSMNP EAST LOOP



**Approximately 112 miles - Easy  
4-6 hr ride**

Don't pass up a chance to see the sights of Great Smoky Mountains National Park, better yet, entry into the National Park is completely free! This ride loops the east side of the park. Plan extra time during peak season. Map # 49101.

### DIRECTIONS:

1. Start: Maggie Valley - US 19 W
2. Continue into Cherokee
3. Right on US 441 to GSMNP
4. \*Optional: BRP to bypass Cherokee then right on US 441 towards GSMNP
5. Veer Right at Sugarlands Visitor Center
6. Keep Right, pass through Gatlinburg
7. Veer Right towards US 321
8. Left onto US 321
9. Right onto Foothills Parkway
10. Veer Right onto I-40
11. Exit 20 for US 276
12. Follow US 276 to US 19
13. Right on US 19 to Start

## NANTAHALA GORGE & WAYAH BALD



**Approximately 145 miles - Difficult  
4-6 hr ride**

Nantahala Gorge is known for it's whitewater rafter as much as it's stunning scenery. Climb to the rivers alpine source then cross Wayah Bald on a ride everyone loves. Complete your loop with a ride on one of North Carolina's best curvy rides. Map # 48412.

### DIRECTIONS:

1. Start: Maggie Valley - US 19 W
2. Pass under BRP
3. Continue to Bryson City
4. Right then Left at lights to continue on US 19
5. Merge onto HWY 23/74
6. Veer left to continue on US 74 when the hwy splits at NC 28
7. Left on Wayah Road
8. Left at stop sign on Old Murphy Rd, Old Murphy Rd becomes West Palmer Rd in Franklin
9. Left on Porter Road
10. Right on Main St
11. Left on Harrison St to NC 28 N
12. Right at stop sign towards Waynesville
13. Left onto BRP ramp
14. Right onto BRP towards Cherokee
15. Exit BRP to US 19
16. Right on US 19 to Start